

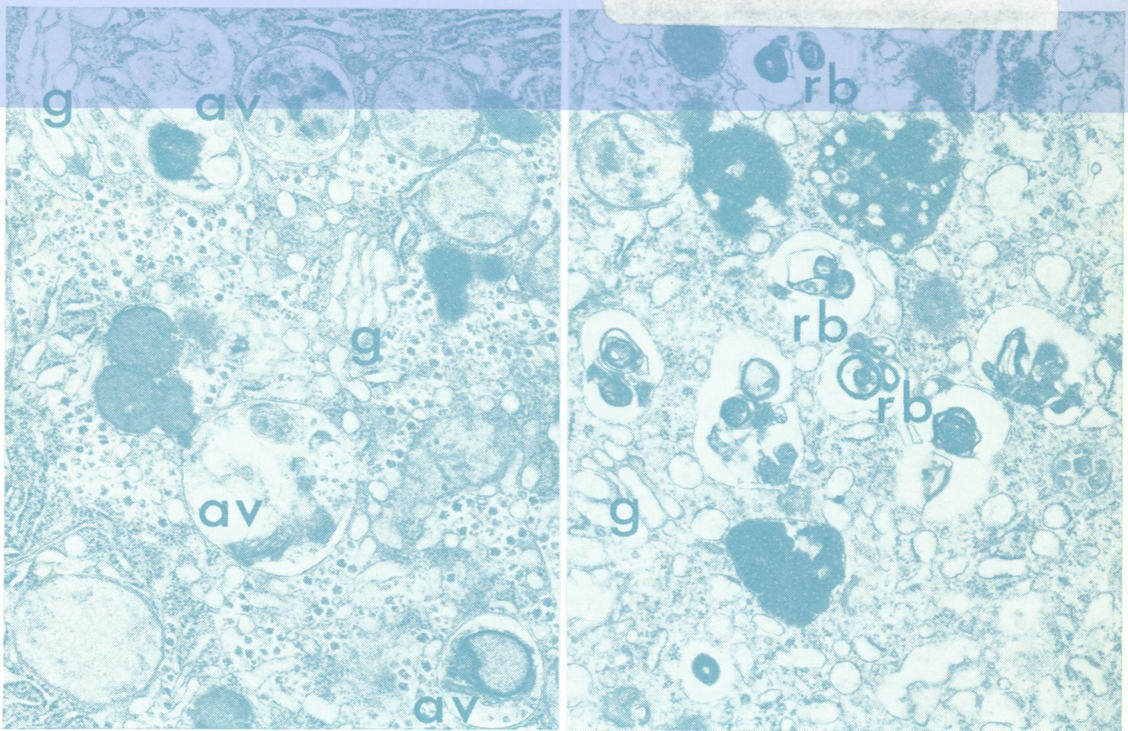
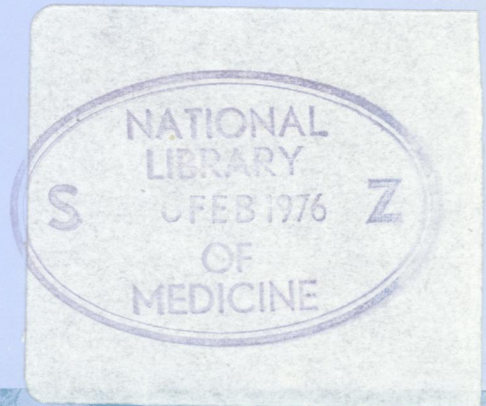
W1  
705896

COPY 2

# Journal of Clinical Pathology

*The Journal of the Association of Clinical Pathologists*

Vol. 29, No. 1, January 1976



(Left) Case 1, immediately following hyperthermia. Portion of a parenchymal cell showing autophagic vacuoles (av) in which enveloped organelles are recognizable. There is dilatation of Golgi elements (g).  $\times 20\ 000$ . (Right) Case 1, 24 hours after hyperthermia. Autophagic vacuoles in the parenchymal cell cytoplasm are mostly at the residual body stage (rb). Golgi components (g) are dilated  $\times 20\ 000$ . See figs 4 and 5, page 4



**29 (1)**

*J Clin Pathol* 1976 29: 1-88

---

Updated information and services can be found at:  
<http://jcp.bmj.com/content/29/1.citation>

---

**Email alerting  
service**

*These include:*

Receive free email alerts when new articles cite this article. Sign up in the box at the top right corner of the online article.

---

**Notes**

---

To request permissions go to:  
<http://group.bmj.com/group/rights-licensing/permissions>

To order reprints go to:  
<http://journals.bmj.com/cgi/reprintform>

To subscribe to BMJ go to:  
<http://group.bmj.com/subscribe/>