

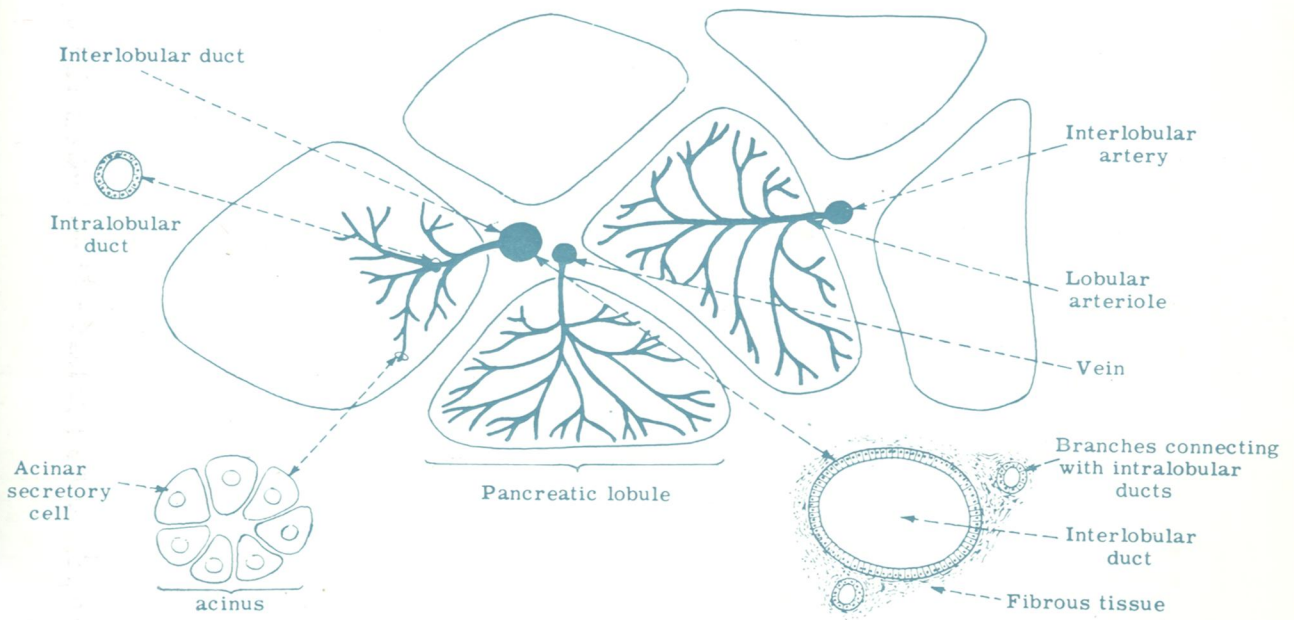
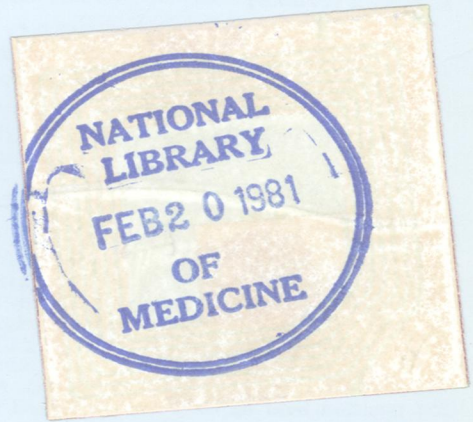
VI  
505896

DR  
18

# Journal of Clinical Pathology

*The Journal of the Association of Clinical Pathologists*

Vol 33, No 12, December 1980



*Pancreatic microanatomy. See Fig. 1, page 1125.*



**33 (12)**

*J Clin Pathol* 1980 33: 1125-1225

---

Updated information and services can be found at:  
<http://jcp.bmj.com/content/33/12.citation>

---

**Email alerting  
service**

*These include:*

Receive free email alerts when new articles cite this article. Sign up in the box at the top right corner of the online article.

---

**Notes**

---

To request permissions go to:  
<http://group.bmj.com/group/rights-licensing/permissions>

To order reprints go to:  
<http://journals.bmj.com/cgi/reprintform>

To subscribe to BMJ go to:  
<http://group.bmj.com/subscribe/>