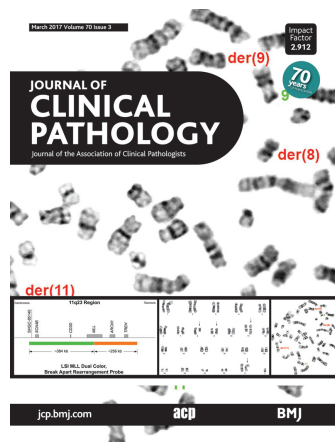


Journal of Clinical Pathology



Cover legend: 11q23 rearrangement in acute leukaemia and myelodysplastic syndrome.

Contents

Editorial

- 185** The new MedTech Europe directive: implications for educational activities in pathology and laboratory medicine *T S Pillay*


Review

- 187** T cell-rich lymphoid infiltrates with large B cells: a review of key entities and diagnostic approach
 *C L Cheng, S O'Connor*

Original articles

- 202** RGS1 expression is associated with poor prognosis in multiple myeloma *J Roh, S-J Shin, A-N Lee, D H Yoon, C Suh, C-J Park, J Huh, C-S Park*
- 208** Lymphocytic oesophagitis, eosinophilic oesophagitis and compound lymphocytic–eosinophilic oesophagitis I: histological and immunohistochemical findings *C A Rubio, T Ichiya, P T Schmidt*
- 217** Cadherin 5 expression correlates with poor survival in human gastric cancer *K Higuchi, M Inokuchi, Y Takagi, T Ishikawa, S Otsuki, H Uetake, K Kojima, T Kawano*
- 222** On the histogenesis of mixed germ cell-sex cord stromal tumour of the gonads *L M Roth, L Cheng*
- 228** Malignant peritoneal mesothelioma and Crohn disease *K J Butnor, E N Pavlisko, T A Sporn, V L Roggli*
- 233** Catechol-O-methyltransferase Val158Met polymorphism is associated with increased risk of multiple uterine leiomyomas either positive or negative for *MED12* exon 2 mutations
L K Dzhemlikhanova, O A Efimova, N S Osinovskaya, S E Parfenyev, D A Niauri, I Y Sultanov, O V Malysheva, A A Pendina, N Y Shved, T E Ivashchenko, M I Yarmolinskaya, M I Kakhiani, E A Gorovaya, A N Tkachenko, V S Baranov
- 237** Regression grading in neoadjuvant treated pancreatic cancer: an interobserver study *S N Kalimuthu, S Serra, N Dhani, S Hafezi-Bakhtiari, E Szentgyorgyi, R Vajpeyi, R Chetty*

March 2017 Volume 70 Issue 3

- 244** Acute leukaemia and myelodysplastic syndromes with chromosomal rearrangement involving 11q23 locus, but not *MLL* gene *W Zuo, S A Wang, C DiNardo, M Yabe, S Li, L J Medeiros, G Tang*
- 250** DNA hypermethylation analysis in sputum of asymptomatic subjects at risk for lung cancer participating in the NELSON trial: argument for maximum screening interval of 2 years *A J Hubers, D A M Heideman, S Duin, B I Witte, H J de Koning, H J M Groen, C F M Prinsen, A S Bolijn, M Wouters, S E van der Meer, R D M Steenbergen, P J F Snijders, A Uytendaele, H Berkhof, E F Smit, E Thunnissen*
- 255** Comprehensive profiling of metaplastic breast carcinomas reveals frequent overexpression of programmed death-ligand 1 *U Joneja, S Vranic, J Swensen, R Feldman, W Chen, J Kimbrough, N Xiao, S Reddy, J Palazzo, Z Gatalica*

- 260** The usefulness of a novel fully automated PCR-based Idylla test for detection of the BRAF V600E mutation in thyroid tissue: comparison with PNA-clamping PCR, real-time PCR and pyrosequencing *M-K Yeo, M-K Jung, S-Y Lee, Y-M Lee, G M Hur, J-M Kim*

Short reports

- 266** A simple human co-culture model of lymphatic invasion *K Naidoo*
- 270** Incidental EBV-positivity in paediatric post-transplant specimens demonstrates the need for stringent criteria for diagnosing post-transplant lymphoproliferative disorders *R L King, M E Paessler, M T Howard, G B Wertheim*

PostScript

- 265** Correction
- 274** Correspondence



This article has been chosen by the Editor to be of special interest or importance and is freely available online.



Articles carrying the Unlocked Logo are freely available online under the BMJ Journals unlocked scheme. See <http://authors.bmj.com/open-access/>

C O P E

Member since 2008

This journal is a member of and subscribes to the principles of the Committee on Publication Ethics
www.publicationethics.org

equator
network

recycle

When you have finished with this please recycle it

MCQS

The online version of this article contains multiple choice questions hosted on BMJ Learning.



70 (3)

J Clin Pathol 2017 70: 185-276

Updated information and services can be found at:

<http://jcp.bmj.com/content/70/3>

These include:

**Email alerting
service**

Receive free email alerts when new articles cite this article. Sign up in the box at the top right corner of the online article.

Notes

To request permissions go to:

<http://group.bmj.com/group/rights-licensing/permissions>

To order reprints go to:

<http://journals.bmj.com/cgi/reprintform>

To subscribe to BMJ go to:

<http://group.bmj.com/subscribe/>