

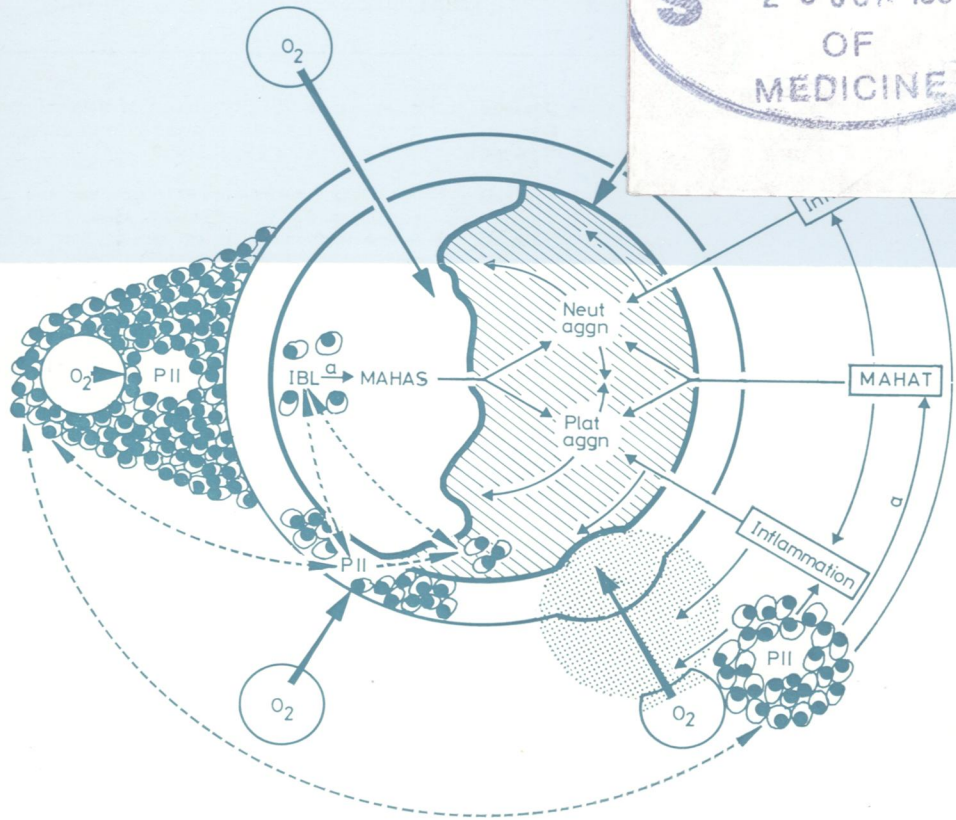
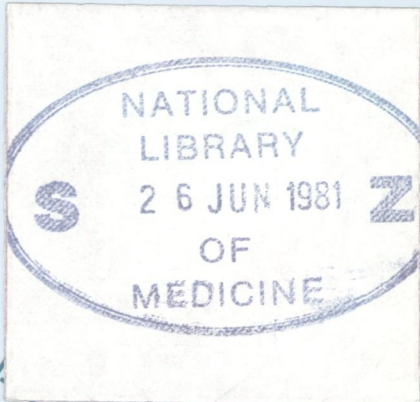
REF  
JO 5896

C.2

# Journal of Clinical Pathology

*The Journal of the Association of Clinical Pathologists*

Vol 34, No 5, May 1981



- Venule
- Terminal bronchioles and alveoli
- Immunoblasts
- Fibrin
- Oedema
- Possible immunoblast migration pathways

*Pathophysiological mechanisms that may result in various pulmonary defects in patients with angioimmunoblastic lymphadenopathy, pulmonary immunoblastic infiltration and multiple antihemolytic antibodies in the serum, and the possible amplification of some of these by chemotherapy. See Fig. 5, page 492.*