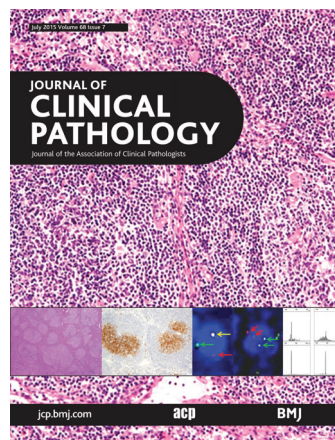


Journal of Clinical Pathology



Cover legend: Identification of in situ follicular lymphoma. See page 541.

Contents

July 2015 Volume 68 Issue 7

Viewpoint

- 499** Overview of contemporary guidelines in digital pathology: what is available in 2015 and what still needs to be addressed? *M G Hanna, L Pantanowitz, A J Evans*

Reviews

- 506** Role of inflammatory infiltrates in triple negative breast cancer *H Matsumoto, S-I Koo, R Dent, P H Tan, J Iqbal*
- 511** Young-age prostate cancer *S Hussein, S Satturwar, T Van der Kwast*

Original articles

- 516** Expression of p40 and laminin 332 in metaplastic spindle cell carcinoma of the breast compared with other malignant spindle cell tumours *T M D'Alfonso, D S Ross, Y-F Liu, S J Shin*
- 522** Differentiating primary and extragenital metastatic mucinous ovarian tumours: an algorithm combining PAX8 with tumour size and laterality *A Hu, H Li, L Zhang, C Ren, Y Wang, Y Liu, C Liu*
- 529** The role of biological markers of epithelial to mesenchymal transition in oesophageal adenocarcinoma, an immunohistochemical study *M J D Prins, J P Ruurda, M P Lolkema, R Siar, F J W ten Kate, R van Hillegersberg*
- 536** False negative rate for intraoperative sentinel lymph node frozen section in patients with breast cancer: a retrospective analysis of patients in a single Asian institution *J Wong, W S Yong, A A Thike, J Iqbal, A S Salahuddin, G H Ho, P Madhukumar, B K T Tan, K W Ong, P H Tan*
- 541** A retrospective study of patients with follicular lymphoma (FL): identification of in situ FL or FL-like B cells of uncertain significance in lymph nodes resected at the time of previous surgery for carcinomas *K Morita, H Nakamine, T Nakai, M Takano, M Takeda, Y Enomoto, Y Yoshii, M Kanno, C Ohbayashi*
- 547** Preoperative serum-gamma-glutamyltransferase (GGT) does not represent an independent prognostic factor in a European cohort of patients with non-metastatic renal cell carcinoma *O Dalpiaz, M Pichler, E Mrcic, D Reitz, D Krieger, L Venturino, A Bezan, T Stojakovic, K Pummer, R Zigeuner, G C Hutterer*

- 552** High intensity of cytoplasmic peroxiredoxin VI expression is associated with adverse outcome in diffuse large B-cell lymphoma independently of International Prognostic Index *M E L Kuusisto, K-M Haapasaari, T Turpeenniemi-Hujanen, E Jantunen, Y Soini, P Peroja, R Bloigu, P Karihtala, O Kuitinen*
- 557** Infrequent DNA methylation of *miR-9-1* and *miR-9-3* in multiple myeloma *Q Zhang, L Q Wang, K Y Wong, Z Y Li, C S Chim*
- 562** Effects of α -thalassaemia mutations on the haematological parameters of β -thalassaemia carriers *N Saleh-Gohari, M K Bami, R Nikbakht, H Karimi-Maleh*
- 567** Cobas 4800 HPV detection in the cervical, vaginal and urine samples of women with high-grade CIN before and after treatment *G A Stanczuk, H Currie, G Baxter, A Foster, L Gibson, C Graham, K Cuschieri*

Short reports

- 571** Characterisation of subpopulations of myeloid cells in infantile haemangioma *E M S Tan, D A Chudakova, P F Davis, H D Brasch, T Itinteang, S T Tan*
- 575** Discordant pattern of *BRCA1* gene epimutation in blood between mothers and daughters *T K Wojdacz, F Harari, M Vahter, K Broberg*

PostScript

- 578** Letter to the Editor
- 579** Correspondence
- 583** Book review

Correction

- 577** Correction

Electronic pages

- e2** Errata

Receive regular table of contents by email.
Register using this QR code.



This article has been chosen by the Editor to be of special interest or importance and is freely available online.



Articles carrying the Unlocked Logo are freely available online under the BMJ Journals unlocked scheme. See <http://jcp.bmj.com/info/unlocked.dtl>

C O P E COMMITTEE ON PUBLICATION ETHICS

This journal is a member of and subscribes to the principles of the Committee on Publication Ethics
www.publicationethics.org

equator
network

recycle

When you have finished
with this please recycle it

MCQs

The online version of this article contains multiple choice questions hosted on BMJ Learning.

jcp.bmj.com

BMJ