

Mid-regional proadrenomedullin (MR-proADM), C-reactive protein (CRP) and other biomarkers in the early identification of disease progression in patients with COVID-19 in the acute NHS setting

Nathan Moore ¹, Rebecca Williams,¹ Matilde Mori,² Beatrice Bertolusso,³ Gabrielle Vernet,⁴ Jessica Lynch,¹ Pete Philipson,⁵ Thomas Ledgerwood,¹ Stephen P Kidd ¹, Claire Thomas,^{1,2} Veronica Garcia-Arias,¹ Michelle Young,⁶ Kordo Saeed,^{2,7} Kirsty Gordon,⁸ Nicholas Cortes^{1,2}

► Additional supplemental material is published online only. To view, please visit the journal online (<http://dx.doi.org/10.1136/jclinpath-2021-207750>).

For numbered affiliations see end of article.

Correspondence to

Dr Nathan Moore, Basingstoke and North Hampshire Hospital, Basingstoke, UK; nathan.moore@hft.nhs.uk

NM and RW are joint first authors.

Received 9 June 2021
Accepted 14 December 2021
Published Online First
7 January 2022

ABSTRACT

Aims There is a lack of biomarkers validated for assessing clinical deterioration in patients with COVID-19 on presentation to secondary or tertiary care. This evaluation looked at the potential clinical application of C reactive protein (CRP), procalcitonin, mid-regional proadrenomedullin (MR-proADM) and white cell count to support prediction of clinical outcomes.

Methods 135 patients presenting to Hampshire Hospitals NHS Foundation Trust between April and June 2020 confirmed to have COVID-19 via reverse-transcription-qPCR were included. Biomarkers from within 24 hours of presentation were used to predict disease progression by Cox regression and area under the receiver operating characteristic curves. The endpoints assessed were 30-day all-cause mortality, intubation and ventilation, critical care admission and non-invasive ventilation (NIV) use.

Results Elevated MR-proADM was shown to have the greatest ability to predict 30-day mortality adjusting for age, cardiovascular disease, renal disease and neurological disease. A significant association was also noted between raised MR-proADM and CRP concentrations and the requirement for critical care admission and NIV.

Conclusions The measurement of MR-proADM and CRP in patients with confirmed COVID-19 infection on admission shows significant potential to support clinicians in identifying those at increased risk of disease progression and need for higher level care, subsequently enabling prompt escalation in clinical interventions.

INTRODUCTION

Since initial reports of a cluster of pneumonia cases arising from Wuhan, Hubei and the subsequent identification of the causative *betacoronavirus*, the SARS-CoV-2 has infected over 100 million people globally and directly resulted in the deaths of approximately 2.3 million by January 2021.

The progressive multiorgan failure associated with SARS-CoV-2 mortality is driven in part by significant inflammation and microvascular thrombosis. Presence of SARS-CoV-2 within the endothelium can cause a secondary endotheliitis and an impairment of vascular blood flow, a prothrombotic

state and vascular leakage.¹ During endotheliitis there is elevation of biomarkers, such as neutrophil extracellular traps, that can lead to microvascular thrombosis and inflammation.²

Adrenomedullin is a peptide that has been shown to have a role in preserving the integrity and stability of the endothelium after severe infection. Furthermore, it has potent vasodilatory properties, as well as having a role in immunomodulation and metabolic regulation. It is upregulated in several pathogenic processes, including sepsis and the progression of septic patients towards multiorgan failure.^{3–5}

The novel biomarkers mid-regional proadrenomedullin (MR-proADM) has also been shown to be predictive of poor clinical outcomes in patients with sepsis and infections involving the respiratory^{6,7} and urinary^{8,9} systems. Similarly, it has been demonstrated during non-infective processes such as heart failure and kidney injury.¹⁰ As a precursor amino acid sequence that splits from proadrenomedullin, MR-proADM is used as a surrogate marker for adrenomedullin. It can be measured via an automated immunofluorescent assay, as levels are directly proportional to adrenomedullin which rapidly breaks down in blood.

The instigation of an appropriate management plan is dependent on an adequate assessment of the infection severity, which is determined by the host pathophysiological response and the virulence of the organism causing infection. However, infection is a dynamic process with infection severity changing over time within an individual. As infection progresses, patients may transition from low severity to high severity which if not identified, may lead to delayed or inappropriate therapy. Therefore, biomarkers that could help stratify risk of disease progression are of clinical interest as they may help guide appropriate early management and patient placement within hospital. A recent study by Saeed *et al* found that the measurement of MR-proADM could effectively predict disease progression, identifying those at increased risk of mortality, those who would need Intensive Care Unit (ICU) admission and those requiring a longer length of



© Author(s) (or their employer(s)) 2023. No commercial re-use. See rights and permissions. Published by BMJ.

To cite: Moore N, Williams R, Mori M, *et al*. *J Clin Pathol* 2023;**76**:400–406.

stay in hospital. Furthermore, they identified its potential use in facilitating early discharge from hospital, with no increase in mortality.¹¹

The aim of this study was to assess the effectiveness of a number of biomarkers, both established and emerging, in the acute setting as prognostic markers to support clinicians in the early identification of patients with COVID-19 at risk of mortality, ICU admission and ventilation.

METHODS

Study design and data collection

In this observational study, we identified patients confirmed to have SARS-CoV-2 at a district general hospital, Hampshire Hospitals NHS Foundation Trust, during the first wave of the virus between April and June 2020. SARS-CoV-2 was detected by real-time reverse-transcription PCR using the COVID-19 genisig Real-Time PCR assay (Primerdesign, Chandler's Ford, UK). This resulted in 135 eligible consecutive patients. All blood samples analysed were collected as part of routine clinical care on presentation to the emergency department. Measurement of C reactive protein (CRP) on serum samples was performed on ADVIA 2400 analysers; procalcitonin (PCT) on Centaur XP analysers and full blood count and differential white blood cell counts were performed on ethylenediaminetetraacetic acid (EDTA) samples on Siemens Advia 2120i (all Siemens Healthineers, Tarrytown, New York, USA). Measurement of MR-proADM was performed (within 72 hours of collection, in line with manufacturer's guidance) on EDTA blood samples taken on presentation using an immunoassay (B.R.A.H.M.S. KRYPTOR, Thermo Fisher Scientific, Hennigsdorf, Germany). Those performing the assays were blinded to clinical outcomes. Where these variables had not been requested by the responsible clinician, attempts were made to locate the original sample and perform the assay, within 24 hours.

Patients were followed up until discharge, with demographics, comorbidities, admission and discharge dates, non-invasive ventilation (NIV) use, need for intubation and ventilation, admission to ICU and mortality data being anonymously collected. Clinicians caring for the patients were unaware that outcome data were being collated in relation to the above biomarkers.

Statistical analysis

Cases and controls were determined by outcome variables during univariate and multivariate Cox Regression. However, this was only performed for clinical outcomes with a sufficiently high event per variable ratio.^{12,13} Time to event analysis was right censored at 30 days. The Cox proportional hazard models were checked for proportionality by correlating sets of scaled Schoenfeld residuals with time, to test for independence between residuals and time. Where proportionality was not met stratification was performed as necessary. HRs and C-index score were calculated with corresponding 95% CIs. Confounding variables for the multivariate analysis were selected based on those that were significant on univariate logistic regression following Bonferroni correction, with a p value of <0.005.

Symmetrically distributed variables were reported using the mean (SD), whereas variables exhibiting a skewed distribution were reported using the median (first quartile–third quartile). The χ^2 test was used to assess differences in categorical variables in the demographics and clinical characteristics

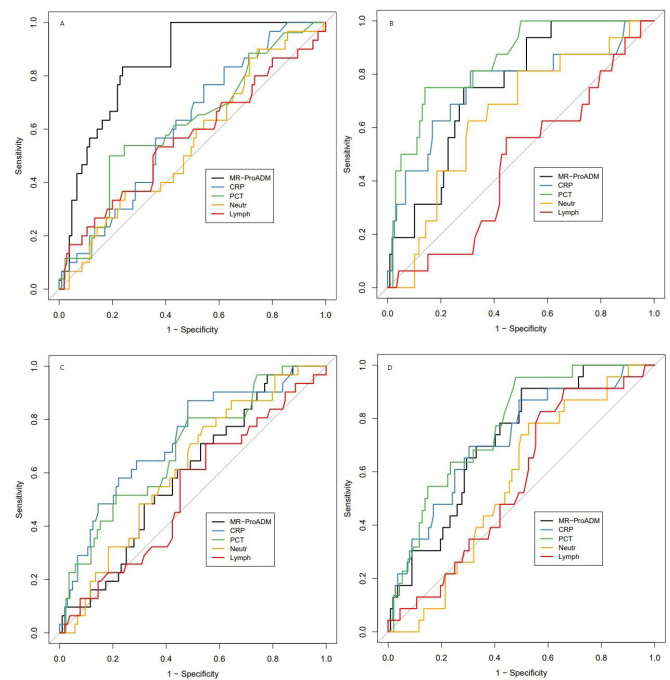


Figure 1 Univariate receiver operating characteristic curves for predicting outcomes starting top left and progressing clockwise towards bottom left. (A) 30-day mortality. (B) critical care admission. (C) NIV use. (D) Intubation and ventilation. CRP, C reactive protein; MR-proADM, mid-regional proadrenomedullin; NIV, non-invasive ventilation; PCT, procalcitonin.

between those who did and did not die within 30 days, with the Mann-Whitney U test being used to assess differences in continuous variables and Student's t-test for age.

Data analysis was performed using R V.4.0.1.

Receiver operating characteristic curves with area under the curve (AUC) analysis were used to determine predictive value for each clinical endpoint with 95% CIs to establish significance (figures 1 and 2). To investigate if individual biomarkers offer a significant improvement in predicting an adverse outcome over a model incorporating previously identified confounding variables, as outlined above, AUC analyses were compared using a bootstrap method.

RESULTS

Samples from 135 patients in total were analysed with a mean age of 64.6 years and a predominance of males (51.9% males vs 48.1% females). The patient group included 105 who had survived by 30 days post admission and 30 who had died by this timepoint. The characteristics of the patient cohort are described in online supplemental table 1.

Median biomarker concentrations in this group showed elevated median CRP 59 mg/L (Q1–Q3, range 17–143) and MR-proADM 1.02 nmol/L (Q1–Q3, range 0.71–1.61); median levels within normal clinical ranges for total white blood cell count $7.1 \times 10^9/L$ (Q1–Q3, range 5.2–9.65), neutrophils $5.31 \times 10^9/L$ (Q1–Q3, range 3.51–7.66) and PCT 0.13 ng/mL (Q1–Q3, range 0.07–0.41) but a suppressed median lymphocyte count $0.98 \times 10^9/L$ (Q1–Q3, range 0.70–1.36).

Twenty five of these patients were enrolled into the RECOVERY trial with nine receiving standard care, six receiving hydroxychloroquine, six receiving

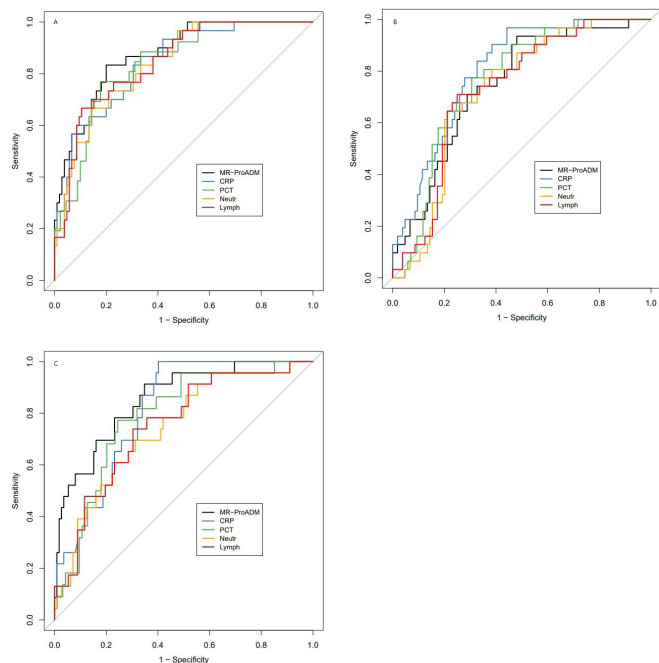


Figure 2 Multivariate receiver operating characteristic curves for predicting outcomes, starting top left and progressing clockwise. (A) 30-day mortality. (B) Critical care admission. (C) NIV use. CRP, C reactive protein; MR-proADM, mid-regional proadrenomedullin; NIV, non-invasive ventilation; PCT, procalcitonin.

lopinavir–ritonavir and three receiving azithromycin, all of which were deemed to have no clinical benefit.^{14–16} One patient received dexamethasone as part of the RECOVERY trial. Otherwise, none of the patients received other immunomodulation, including Interleukin 6 inhibitors (tocilizumab or sarilumab), Interleukin 1inhibitors (such as anakinra) or convalescent plasma.

Multivariate Cox regression adjusted for age, cardiovascular disease, renal disease and neurological disease. Proportionality was checked for all Cox regression models and stratification performed as necessary.

MR-proADM

For this novel biomarker, Saeed *et al*¹¹ have previously derived and proposed, in an acute patient population where viral infections comprised less than 3% of the dataset, a cut-off of 1.54 nmol/L as a predictor of elevated mortality, higher rate of ICU admission and longer length of stay. Applying this cut-off to our population of patients with COVID-19 shows significantly ($p=1.59 \times 10^{-5}$) lower mortality rate of 11.11% ($N=11$) in the patients with MR-proADM values <1.54 nmol/L ($N=99$ (73.33%)) compared with a higher mortality rate of 52.78% ($N=19$) in patients ($N=36$, (26.67%)) with MR-proADM values equal to or exceeding a cut-off of 1.54 nmol/L. Within the aforementioned study, a threshold of <0.88 nmol/L was identified as a potential cut-off for identifying patients at very low risk for deterioration and mortality, which is commensurate with other studies in populations with bacterial infections of the respiratory and urinary tracts^{17,18} or with that of Sozio *et al*.¹⁹ None of the patients who died ($N=30$) had a MR-proADM value below the predefined threshold of <0.88 nmol/L ($p=1.61 \times 10^{-9}$).

Of interest, 52 (38.52%) patients with MR-proADM values of <0.88 nmol/L had a median inpatient stay of 4 days (IQR

0.75–9 days), representing a significantly shorter length of stay than those with an MR-proADM of >0.88 nmol/L whose median stay was 12 days (IQR 5–22.5 days), $p<0.00001$.

30-day mortality

Online supplemental table 1 compares the patient demographics and clinical characteristics between survivors and non-survivors. Of note CRP, PCT and MR-proADM were all significantly raised among those who did not survive at day 30.

Univariate Cox regression analysis found MR-proADM to have the greatest ability to predict 30-day mortality (Wald 20.3, HR 1.5455 (1.279 to 1.868)), with CRP also proving effective at predicting 30-day mortality (Wald 4.02, HR 1.0034 (1.000 to 1.007)) as shown in table 1.

Although PCT was significant for univariate Cox regression analysis (Wald 11.54, HR 1.0898 (1.037 to 1.145)), the assumption of proportional hazards was not supported for PCT. Rather than attempting to estimate a time-dependent coefficient in order to include covariates with time-varying coefficients multivariate analysis was not performed. Both MR-proADM (Wald 23.736, HR 1.809 (1.454 to 2.407)) and CRP (Wald 12.166, HR 1.0069 (1.003 to 1.011)) remained significant for predicting 30-day mortality following adjustment for age, cardiovascular disease, renal disease and neurological disease (table 2). Similarly, lymphocyte count was significant in predicting 30-day mortality after adjusting for covariates (Wald 6.6564, HR 1.1213 (1.028 to 1.223)).

AUC analysis demonstrated that MR-proADM offered the greatest accuracy in predicting 30-day mortality with an AUC of 0.8441 (table 3). This was a significant improvement in predicting 30-day mortality over a model combining age, renal disease, cardiovascular disease and neurological disease with an AUC of 0.874 ($p=0.01727$), whereas CRP did not offer an improvement ($p=0.1464$), as demonstrated in table 4.

Intubation and ventilation

Elevated MR-proADM (Wald 12.37, HR 1.6015 (1.232 to 2.082)) and CRP (Wald 16.57, HR 1.0069 (1.004 to 1.010)) were both associated with an increase in the need for intubation and ventilation when performing univariate Cox regression. No firm conclusions are offered here from a multivariate analysis for prediction of need for intubation and ventilation due to the lower number of events per predictor variable, though the results are suggestive for both MR-proADM and CRP having efficacy in predicting the need for intubation.

Admission to critical care

On univariate analysis, only CRP demonstrated a significant association with a requirement for admission to critical care (Wald 15.83, HR (1.0055 to 1.008)), which was maintained once controlled for covariates; however, proportionality was affected by renal disease (χ^2 4.2243, $p=0.04$), which was therefore taken out by stratification (Wald 22.062, HR 1.0078 (1.005 to 1.011)). Although insignificant on univariate analysis MR-proADM (Wald 3.2, HR 1.257 (0.978 to 1.615)) did exhibit a significant association with a requirement for critical care once covariates were controlled for (Wald 10.151, HR 1.5451 (1.182 to 2.019)).

Only CRP provided an improvement over the previously described combined model with an AUC of 0.8026 ($p=0.012$).

Table 1 Univariate Cox regression for prediction of 30-day mortality, requirement of critical care, NIV and intubation and ventilation using biomarkers in baseline bloods

Biomarker	Patients (N)	Cases (N)	Wald	D.F.	C-index (95% CI)	HR (95% CI)	P value
Prediction of 30-day mortality							
MR-proADM	135	30	20.3	1	0.811 (0.746 to 0.876)	1.5455 (1.279 to 1.868)	6.64e-6
CRP	135	30	4.02	1	0.613 (0.515 to 0.711)	1.0034 (1.000 to 1.007)	0.0449
PCT	116	26	11.54	1	0.621 (0.511 to 0.731)	1.0898 (1.037 to 1.145)	0.000681
Neutrophils	135	30	0.73	1	0.549 (0.445 to 0.653)	0.9555 (0.861 to 1.061)	0.394
Lymphocytes	135	30	3.53	1	0.448 (0.338 to 0.558)	1.0920 (0.996 to 1.197)	0.0603
Prediction of requiring critical care admission							
MR-proADM	135	31	3.2	1	0.614 (0.518 to 0.710)	1.2570 (0.978 to 1.615)	0.0737
CRP	135	31	15.83	1	0.716 (0.624 to 0.808)	1.0055 (1.003 to 1.008)	0.0000695
PCT	116	31	0.03	1	0.687 (0.595 to 0.779)	1.0050 (0.951 to 1.062)	0.86
Neutrophils	135	31	0.37	1	0.609 (0.511 to 0.707)	1.0183 (0.960 to 1.080)	0.544
Lymphocytes	135	31	2.52	1	0.465 (0.357 to 0.573)	1.0759 (0.983 to 1.178)	0.113
Prediction of requiring NIV							
MR-proADM	135	23	11.62	1	0.726 (0.634 to 0.818)	1.4992 (1.188 to 1.892)	0.000651
CRP	135	23	15.53	1	0.725 (0.617 to 0.833)	1.0061 (1.003 to 1.009)	0.0000813
PCT	116	22	0.1	1	0.772 (0.682 to 0.862)	1.0098 (0.952 to 1.072)	0.747
Neutrophils	135	23	0.06	1	0.432 (0.324 to 0.540)	0.9883 (0.901 to 1.085)	0.804
Lymphocytes	135	23	4.81	1	0.552 (0.442 to 0.662)	1.0991 (1.010 to 1.196)	0.0283
Prediction of intubation and ventilation							
MR-proADM	135	16	12.37	1	0.748 (0.650 to 0.846)	1.6015 (1.232 to 2.082)	0.000435
CRP	135	16	16.57	1	0.745 (0.614 to 0.876)	1.0069 (1.004 to 1.010)	0.0000469
PCT	116	16	0.63	1	0.836 (0.746 to 0.926)	1.0215 (0.969 to 1.077)	0.429
Neutrophils	135	16	0.43	1	0.641 (0.514 to 0.768)	1.0259 (0.950 to 1.107)	0.513
Lymphocytes	135	16	0.09	1	0.468 (0.337 to 0.599)	0.9415 (0.630 to 1.408)	0.769

CRP, C reactive protein; D.F., Degrees of Freedom; MR-proADM, mid-regional proadrenomedullin; NIV, non-invasive ventilation; PCT, procalcitonin.

Non-invasive ventilation

Once again elevated CRP (Wald 15.53, HR 1.0061 (1.003 to 1.009)) and MR-proADM (Wald 11.62, HR 1.4992 (1.188 to 1.892)) were associated with requirement for NIV following univariate analysis, with both CRP (Wald 18.293, HR 1.0081 (1.004 to 1.012)) and MR-proADM (Wald 30.393, HR 2.5230 (1.816 to 3.506)) both retaining significance on multivariate analysis. Lymphocyte count was not a constant hazard and so further analysis was omitted rather than estimating a time-dependent coefficient.

Both CRP and MR-proADM offered an improvement over the combined model with AUCs of 0.8544 ($p=0.000375$) and 0.8139 ($p=0.001052$), respectively.

DISCUSSION

Our study demonstrates that use of biomarkers, both established and novel, has significant potential to support clinical decisions and aid in identification of hospitalised patients with COVID-19 at both high and low risk for disease progression. Of the biomarkers evaluated, elevated MR-proADM and CRP concentrations showed the greatest potential for clinical application for utilisation to aid prediction of 30-day mortality, critical care admission requirement and need for both invasive ventilation and NIV.

Of these, on multivariate regression analysis, MR-proADM concentration showed the strongest association with an increased 30-day mortality, requirement for non-invasive and invasive ventilation, with CRP showing the strongest association with critical care admission. Our data are also suggestive of an association between elevated MR-proADM and CRP concentration with a progression to being intubated

and ventilated, though more cases are required to verify this by controlling for covariates. This is consistent with previous studies that have shown increased MR-proADM levels to be predictive of intensive care requirement in septic patients.²⁰ Gonzalez del Castillo *et al* identified MR-proADM to have the strongest association for ICU admission and mortality compared with other blood biomarkers in bacterial infections, with concentrations of >1.77 nmol/L having significantly higher rates of ICU stay (8.1% vs 1.6%; $p<0.001$) and disease progression (29.7% vs 4.9%; $p<0.001$) compared with low MR-proADM concentrations.²¹ Application of these and our own findings, applying previously derived thresholds of 0.88 and 1.54 nmol/L, may support clinicians with decisions regarding earlier transfer of selected patients to wards with staff with experience in NIV and earlier transfer to critical care. Finally, when applying the cut-off of <0.89 nmol/L identified by Sozio *et al* to the data presented here, a significant difference in mortality is established with no patients dying, in keeping with the findings of Sozio *et al*.¹⁹ As such, MR-proADM could potentially identify those who are at low risk of deterioration suitable for ambulant monitoring. The use of MR-proADM in an outpatient setting would require further validation studies. Given the retrospective nature of this study, decisions regarding admission and discharge were made on clinical assessment and not on the biomarker values presented here. Similarly, subject to future studies, biomarker concentrations may have significant value in signalling patients suitable for earlier commencement of targeted therapies, including antiviral treatments (eg, remdesivir) or immunomodulation with high-dose steroids or interleukin-6 inhibitors (eg, tocilizumab and sarilumab); in the NHS,

Table 2 Multivariate Cox regression for prediction of 30-day mortality, requirement of critical care, NIV and intubation and ventilation using biomarkers in baseline bloods

Biomarker	Patients (N)	Cases (N)	Wald	D.F.	C-index (95% CI)	HR (95% CI)	P value
Prediction of 30-day mortality							
MR-proADM	135	30	23.736	5	0.827 (0.756 to 0.898)	1.8709 (1.454 to 2.407)	1.1e-6
CRP	135	30	12.166	5	0.788 (0.704 to 0.872)	1.0069 (1.003 to 1.011)	0.000487
PCT	116	26	–	–	–	–	–
Neutrophils	135	30	0.9235	5	0.808 (0.745 to 0.871)	0.9445 (0.841 to 1.061)	0.336 303
Lymphocytes	135	30	6.6564	5	0.791 (0.713 to 0.869)	1.1213 (1.028 to 1.223)	0.009879
Prediction of requiring critical care admission							
MR-proADM	135	31	10.151	5	0.713 (0.621 to 0.805)	1.5451 (1.182 to 2.019)	0.00144
CRP	135	31	22.062	4	0.775 (0.702 to 0.848)	1.0078 (1.005 to 1.011)	2.64e-6
PCT	116	31	0.6084	5	0.715 (0.631 to 0.799)	1.0254 (0.963 to 1.092)	0.43 564
Neutrophils	135	31	0.5761	5	0.686 (0.596 to 0.776)	1.0221 (0.966 to 1.081)	0.44 772
Lymphocytes	135	31	1.4066	5	0.689 (0.599 to 0.779)	1.0638 (0.961 to 1.178)	0.23 544
Prediction of requiring NIV							
MR-proADM	135	23	30.393	5	0.828 (0.740 to 0.916)	2.5230 (1.816 to 3.506)	3.53e-8
CRP	135	23	18.293	5	0.799 (0.725 to 0.873)	1.0081 (1.004 to 1.012)	1.89e-5
PCT	116	22	1.39	5	0.755 (0.659 to 0.851)	1.0454 (0.971 to 1.125)	0.2383
Neutrophils	135	23	0.0266	5	0.72 (0.616 to 0.824)	0.9923 (0.905 to 1.089)	0.8706
Lymphocytes	135	23	–	–	–	–	–
Prediction of intubation and ventilation							
MR-proADM	135	16	22.648	5	0.793 (0.687 to 0.899)	2.2457 (1.609 to 3.134)	1.94e-6
CRP	135	16	18.318	5	0.803 (0.713 to 0.893)	1.0088 (1.005 to 1.013)	1.87e-5
PCT	116	16	2.241	5	0.715 (0.617 to 0.813)	1.0558 (0.983 to 1.134)	0.134
Neutrophils	135	16	0.4543	5	0.665 (0.563 to 0.767)	1.0254 (0.953 to 1.103)	0.500
Lymphocytes	135	16	0.2663	5	0.67 (0.554 to 0.786)	0.8260 (0.400 to 1.707)	0.606

CRP, C reactive protein; D.F., Degrees of Freedom; MR-proADM, mid-regional proadrenomedullin; NIV, non-invasive ventilation; PCT, procalcitonin.

the latter are subject in the UK to specific inclusion criteria which includes physiological derangement and requirement for respiratory support.^{22 23}

Previous studies examining the clinical utility of MR-proADM have focused on predicting adverse events, primarily in patients with a diagnosis of community-acquired pneumonia and elevated MR-proADM levels,⁴ reflecting the development of organ dysfunction. However, these patients typically have had low rates of severe viral infection.^{11 24} We have shown commensurate results in individuals diagnosed with SARS-CoV-2 infections. This may be explained by the development of endothelial dysfunction during SARS-CoV-2 infection, for which endoreticular stress and the activation of the unfolded protein response is a significant inducer. Endothelial dysfunction is associated with complications of COVID-19 including Acute Respiratory Distress Syndrome, thromboembolism and vascular disease, with adrenomedullin known to be a regulator of vascular tone and the integrity and stability of the endothelial barrier.

The early recognition of potential for deterioration in patients infected with SARS-CoV-2 is invariably challenging given the varied clinical course of the disease, particularly with the currently unpredictable potential for deterioration during the second and third weeks of disease. As such, a reliable indicator for early identification of patients at risk of deterioration or a more severe illness trajectory could be of great value, in allowing for earlier targeted intervention or escalation of treatment.

The study has several limitations. Primarily, a higher event per variable ratio is desirable, fortunately however stratification was only needed for one covariate. Greater power

could be achieved through higher participant numbers or through examining serial results over time. A multicentre study with more patients could also allow for prediction of progression from NIV to intubation. It is a retrospective study; it remains to be seen whether application of such biomarkers into clinical diagnostic and management pathways will deliver the potential expected benefits. Clinician confidence in use of such biomarkers to support decisions has to be developed and evidenced in clinical practice.

MR-proADM and CRP may have other clinical utility worth exploring, such as whether measurement of these has use in facilitating earlier discharges¹¹ in individuals with low concentrations or whether a delta change in concentrations could be used to guide decisions on weaning ventilatory support and also the de-escalation or stopping of antibiotics to mitigate against potential future antimicrobial resistance.

CONCLUSIONS

Biomarker measurement, in particular MR-proADM, in patients infected with SARS-CoV-2 on presentation to secondary care shows significant promise in allowing early identification of those at increased risk of disease progression and mortality, possibly providing a tool to support clinical decisions regarding therapeutic interventions and level of care setting. Additionally, adopting use of biomarkers such as MR-proADM in the acute setting carries potential in allowing identification of those at low-risk for severe disease, facilitating discharge decisions. Further prospective, multicentre studies are needed to investigate possible exciting clinical applications of this and other biomarkers.

Table 3 Univariate area under receiver operating characteristic curve data for predicting various outcomes from baseline bloods

Biomarker	Patients (N)	Cases (N)	D.F.	AUC (95% CI)
30-day mortality				
MR-proADM	135	30	1	0.8441 (0.7761 to 0.9122)
CRP	135	30	1	0.6132 (0.5066 to 0.7198)
PCT	116	26	1	0.6212 (0.4963 to 0.7460)
Neutrophils	135	30	1	0.5503 (0.4356 to 0.6650)
Lymphocytes	135	30	1	0.5629 (0.4373 to 0.6884)
Critical care admission				
MR-proADM	135	31	1	0.594 (0.4873 to 0.7007)
CRP	135	31	1	0.7238 (0.6213 to 0.8263)
PCT	116	31	1	0.6856 (0.5771 to 0.7941)
Neutrophils	135	31	1	0.6158 (0.5104 to 0.7213)
Lymphocytes	135	31	1	0.5296 (0.4147 to 0.6446)
NIV				
MR-proADM	135	23	1	0.7189 (0.617 to 0.8209)
CRP	135	23	1	0.722 (0.6068 to 0.8373)
PCT	116	22	1	0.7706 (0.6734 to 0.8677)
Neutrophils	135	23	1	0.5615 (0.4505 to 0.6726)
Lymphocytes	135	23	1	0.5646 (0.4476 to 0.6817)
Intubation and ventilation				
MR-proADM	135	16	1	0.75 (0.6434 to 0.8566)
CRP	135	16	1	0.7545 (0.6059 to 0.903)
PCT	116	16	1	0.8497 (0.7565 to 0.9429)
Neutrophils	135	16	1	0.6476 (0.5104 to 0.7848)
Lymphocytes	135	16	1	0.468 (0.324 to 0.612)

AUC, area under the curve; CRP, C reactive protein; D.F., Degrees of Freedom; MR-proADM, mid-regional proadrenomedullin; NIV, non-invasive ventilation; PCT, procalcitonin.

Take home messages

- ⇒ Admission mid-regional proadrenomedullin (MR-proADM) predicts 30-day mortality in SARS-CoV-2 infection.
- ⇒ Admission MR-proADM predicts critical care requirement in SARS-CoV-2 infection.
- ⇒ Admission MR-proADM predicts non-invasive ventilation (NIV) requirement in SARS-CoV-2 infection.
- ⇒ Admission C reactive protein predicts 30-day mortality, NIV and critical care requirement.
- ⇒ Admission procalcitonin and white cell count do not predict clinical outcomes.

Author affiliations

¹Microbiology Department, Basingstoke and North Hampshire Hospital, Basingstoke, UK

Table 4 Multivariate area under receiver operating characteristic curve data for predicting various outcomes from baseline bloods

Biomarker	Patients (N)	Cases (N)	D.F.	AUC (95% CI)	Bootstrap
30-day mortality					
MR-proADM	135	30	5	0.874 (0.8085 to 0.9395)	0.01727
CRP	135	30	5	0.8441 (0.769 to 0.9192)	0.1464
PCT	116	26	5	0.8406 (0.7619 to 0.9193)	0.06908
Neutrophils	135	30	5	0.8394 (0.7667 to 0.9121)	0.1417
Lymphocytes	135	30	5	0.8448 (0.7716 to 0.918)	0.1056
Critical care admission					
MR-proADM	135	31	5	0.7466(0.6553 to 0.8379)	0.1457
CRP	135	31	5	0.8026 (0.7256 to 0.8796)	0.012
PCT	116	31	5	0.7632 (0.6747 to 0.8517)	0.1465
Neutrophils	135	31	5	0.7252 (0.6359 to 0.8145)	0.2458
Lymphocytes	135	31	5	0.7317 (0.6413 to 0.8221)	0.2132
NIV					
MR-proADM	135	23	5	0.8544 (0.7727 to 0.9362)	0.000375
CRP	135	23	5	0.8139 (0.7374 to 0.8904)	0.001052
PCT	116	22	5	0.7872 (0.6884 to 0.8861)	0.03331
Neutrophils	135	23	5	0.7418 (0.6341 to 0.8496)	0.07907
Lymphocytes	135	23	5	0.7519 (0.6461 to 0.8578)	0.05353
Intubation and ventilation					
MR-proADM	135	16	5	0.812 (0.7071 to 0.9169)	0.005858
CRP	135	16	5	0.8183 (0.7176 to 0.9189)	0.002934
PCT	116	16	5	0.7256 (0.6193 to 0.8319)	0.1324
Neutrophils	135	16	5	0.6817 (0.576 to 0.7874)	0.2557
Lymphocytes	135	16	5	0.6838 (0.5664 to 0.8012)	0.2675

AUC, area under the curve; CRP, C reactive protein; D.F., Degrees of Freedom; MR-proADM, mid-regional proadrenomedullin; NIV, non-invasive ventilation; PCT, procalcitonin.

²Faculty of Medicine, University of Southampton, Southampton, UK

³Intensive Care, Basingstoke and North Hampshire Hospital, Basingstoke, UK

⁴Emergency Department, Basingstoke and North Hampshire Hospital, Basingstoke, UK

⁵University of Newcastle upon Tyne, Newcastle upon Tyne, UK

⁶Biochemistry Department, Whittington Hospital, London, UK

⁷University Hospital Southampton NHS Foundation Trust, Southampton, UK

⁸Biochemistry Department, Basingstoke and North Hampshire Hospital, Basingstoke, UK

Handling editor Tony Mazzulli.

Acknowledgements Thermo Fisher provided reagent for measurement of mid-regional proadrenomedullin free of charge.

Contributors NM, MY, KG and NC contributed to the study conception and design. Material preparation was performed by TL. Data collection was performed by RW, MM, BB, GV and JL. Data were verified by RW, MM and GV. Analysis was performed by NM and PP. The first draft of the manuscript was written by NM. Authors RW, SPK, CT, VG-A, KS, KG and NC commented on previous versions of the manuscript. NC is

responsible for the overall content as the guarantor. All authors read and approved the final manuscript.

Funding The authors have not declared a specific grant for this research from any funding agency in the public, commercial or not-for-profit sectors.

Competing interests PP received payment from Thermo Fisher and KS has received research grants from Pfizer and Thermo Fisher. However, neither the payment for PP nor the research grants for KS had any role in study conception, the collection, management, analysis or interpretation of the data, in preparation, review or approval of the manuscript or in the decision to submit the manuscript for publication.

Patient consent for publication Not applicable.

Ethics approval Local Hampshire Hospitals NHS Foundation Trust R&D approval was obtained. Health Research Authority (HRA) approval was sought which deemed an ethical review was not necessary. HRA approval was subsequently granted for this project (IRAS project ID: 299130). Anonymised confidential patient information was used under the COVID-19 Control of Patient Information (COPI) notice issued by the UK Department of Health and Social Care.

Provenance and peer review Not commissioned; externally peer reviewed.

Data availability statement Data are available upon reasonable request for up to 3 years after publication.

Supplemental material This content has been supplied by the author(s). It has not been vetted by BMJ Publishing Group Limited (BMJ) and may not have been peer-reviewed. Any opinions or recommendations discussed are solely those of the author(s) and are not endorsed by BMJ. BMJ disclaims all liability and responsibility arising from any reliance placed on the content. Where the content includes any translated material, BMJ does not warrant the accuracy and reliability of the translations (including but not limited to local regulations, clinical guidelines, terminology, drug names and drug dosages), and is not responsible for any error and/or omissions arising from translation and adaptation or otherwise.

This article is made freely available for personal use in accordance with BMJ's website terms and conditions for the duration of the covid-19 pandemic or until otherwise determined by BMJ. You may download and print the article for any lawful, non-commercial purpose (including text and data mining) provided that all copyright notices and trade marks are retained.

ORCID iDs

Nathan Moore <http://orcid.org/0000-0002-4279-2443>

Stephen P Kidd <http://orcid.org/0000-0002-4504-4600>

REFERENCES

- Varga Z, Flammer AJ, Steiger P, *et al*. Endothelial cell infection and endothelitis in COVID-19. *Lancet* 2020;395:1417–8.
- Zuo Y, Yalavarthi S, Shi H, *et al*. Neutrophil extracellular traps in COVID-19. *JCI Insight* 2020;5.
- Gille J, Ostermann H, Dragu A, *et al*. MR-proADM: a new biomarker for early diagnosis of sepsis in burned patients. *J Burn Care Res* 2017;38:290–8.
- Elke G, Bloos F, Wilson DC, *et al*. The use of mid-regional proadrenomedullin to identify disease severity and treatment response to sepsis - a secondary analysis of a large randomised controlled trial. *Crit Care* 2018;22:79.
- Elke G, Bloos F, Wilson DC, *et al*. Identification of developing multiple organ failure in sepsis patients with low or moderate SOFA scores. *Crit Care* 2018;22:147.
- Legramante JM, Mastropasqua M, Susi B, *et al*. Prognostic performance of MR-pro-adrenomedullin in patients with community acquired pneumonia in the emergency department compared to clinical severity scores psi and curb. *PLoS One* 2017;12:e0187702.
- Pereira JM, Azevedo A, Basilio C, *et al*. Mid-regional proadrenomedullin: an early marker of response in critically ill patients with severe community-acquired pneumonia? *Rev Port Pneumol* 2016;22:308–14.
- Stalenhoeft JE, van Nieuwkoop C, Wilson DC, *et al*. Biomarker guided triage can reduce hospitalization rate in community acquired febrile urinary tract infection. *J Infect* 2018;77:18–24.
- van der Starre WE, Zunder SM, Vollaard AM, *et al*. Prognostic value of pro-adrenomedullin, procalcitonin and C-reactive protein in predicting outcome of febrile urinary tract infection. *Clin Microbiol Infect* 2014;20:1048–54.
- von Haehling S, Filippatos GS, Pappasotiropoulos J, *et al*. Mid-regional pro-adrenomedullin as a novel predictor of mortality in patients with chronic heart failure. *Eur J Heart Fail* 2010;12:484–91.
- Saeed K, Wilson DC, Bloos F, *et al*. The early identification of disease progression in patients with suspected infection presenting to the emergency department: a multi-centre derivation and validation study. *Crit Care* 2019;23:40.
- Vittinghoff E, McCulloch CE. Relaxing the rule of ten events per variable in logistic and COX regression. *Am J Epidemiol* 2007;165:710–8.
- Riley RD, Snell KI, Ensor J, *et al*. Minimum sample size for developing a multivariable prediction model: PART II - binary and time-to-event outcomes. *Stat Med* 2019;38:1276–96.
- RECOVERY Collaborative Group. Azithromycin in patients admitted to hospital with COVID-19 (recovery): a randomised, controlled, open-label, platform trial. *Lancet* 2021;397:605–12.
- RECOVERY Collaborative Group, Horby P, Mafham M, *et al*. Effect of hydroxychloroquine in hospitalized patients with Covid-19. *N Engl J Med* 2020;383:2030–40.
- RECOVERY Collaborative Group. Lopinavir-ritonavir in patients admitted to hospital with COVID-19 (recovery): a randomised, controlled, open-label, platform trial. *Lancet* 2020;396:1345–52.
- Albrich WC, Dusemund F, Rüggeger K, *et al*. Enhancement of CURB65 score with proadrenomedullin (CURB65-A) for outcome prediction in lower respiratory tract infections: derivation of a clinical algorithm. *BMC Infect Dis* 2011;11:112.
- Stalenhoeft JE, van Nieuwkoop C, Wilson DC, *et al*. Biomarker guided triage can reduce hospitalization rate in community acquired febrile urinary tract infection. *J Infect* 2018;77:18–24.
- Sozio E, Tascini C, Fabris M, *et al*. MR-proADM as prognostic factor of outcome in COVID-19 patients. *Sci Rep* 2021;11:5121.
- Baldirà J, Ruiz-Rodríguez JC, Wilson DC, *et al*. Biomarkers and clinical scores to aid the identification of disease severity and intensive care requirement following activation of an in-hospital sepsis code. *Ann Intensive Care* 2020;10:7.
- Gonzalez Del Castillo J, Wilson DC, Clemente-Callejo C, *et al*. Biomarkers and clinical scores to identify patient populations at risk of delayed antibiotic administration or intensive care admission. *Crit Care* 2019;23:335.
- NHS England and NHS Improvement. Interim clinical commissioning policy: tocilizumab for critically ill patients with COVID-19 pneumonia (adults), 2021. Available: <https://www.england.nhs.uk/coronavirus/publication/interim-clinical-commissioning-policy-tocilizumab-for-hospitalised-patients-patients-with-covid-19-pneumonia-adults/>
- NHS England and NHS Improvement. Interim clinical commissioning policy: Sarilumab for critically ill patients with COVID-19 pneumonia (adults), 2021. Available: <https://www.england.nhs.uk/coronavirus/publication/interim-clinical-commissioning-policy-sarilumab-for-critically-ill-patients-with-covid-19-pneumonia-adults/>
- Xie Z, Chen W-S, Yin Y, *et al*. Adrenomedullin surges are linked to acute episodes of the systemic capillary leak syndrome (Clarkson disease). *J Leukoc Biol* 2018;103:749–59.