

# Journal of Clinical Pathology

The Journal of the Association of Clinical Pathologists

J Clin Pathol: first published as on 1 March 1970. Downloaded from <http://jcp.bmj.com/> on November 3, 2024 by guest. Protected by copyright.

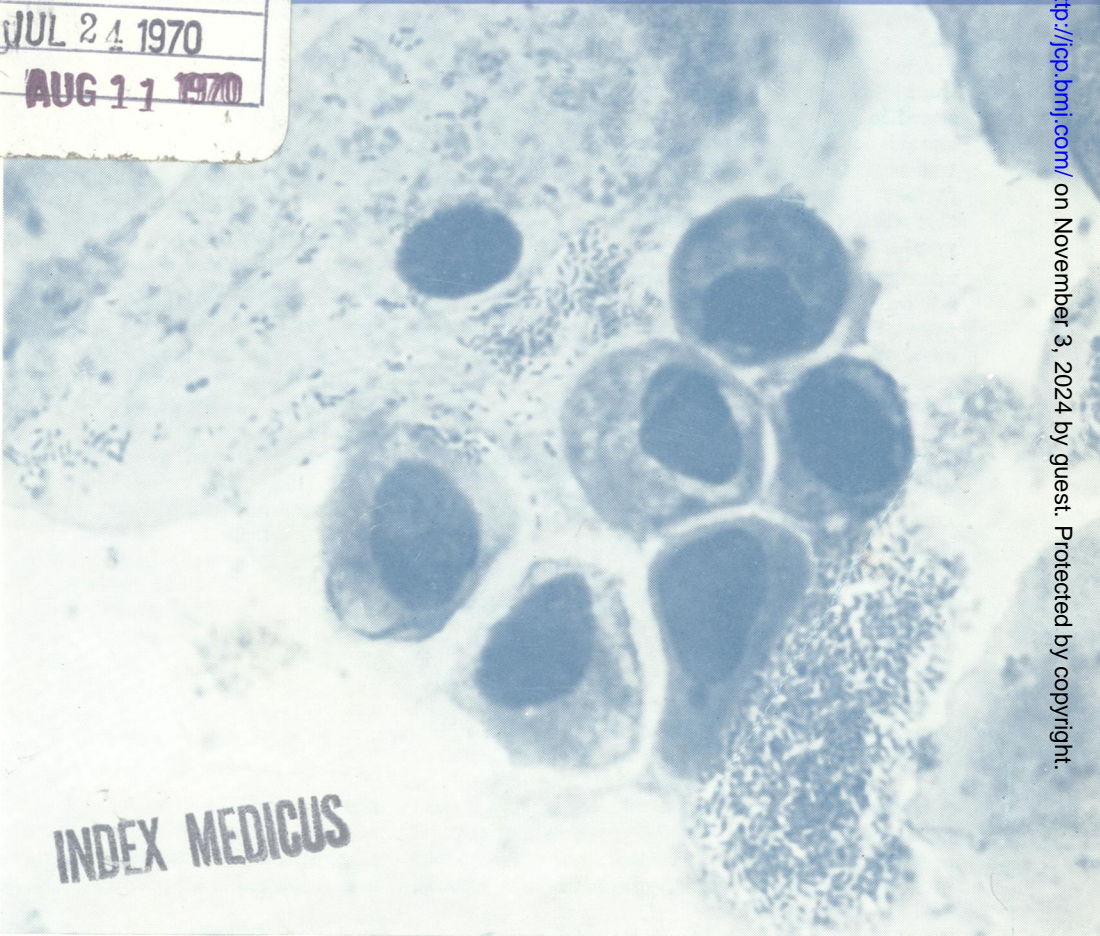
w1  
505896

READING  
ROOM

Vol. 23, No. 2, March 1970

JTC:	HT3
INDEXER:	39
VOL-ISS:	23-2
DATE:	MAR 70
PRIORITY:	1

NATIONAL LIBRARY OF MEDICINE	
RECD.	JUL 22 1970
INDEX	JUL 24 1970
INPUT	AUG 11 1970



INDEX MEDICUS

Epithelioid cells  
between two large  
squamous cells seen  
in the urine  
(no. 18 Table 1)  
during a second  
rejection episode—  
see Fig. 4, page 101.