

WV  
50 5896

Ref.

CONTAINS INDEX

READING ROOM

24  
ms

# Journal of Clinical Pathology

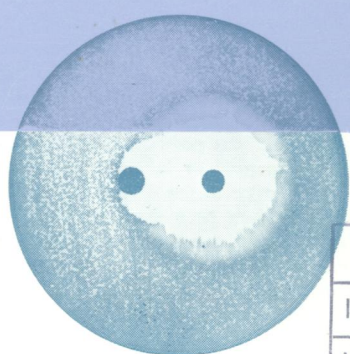
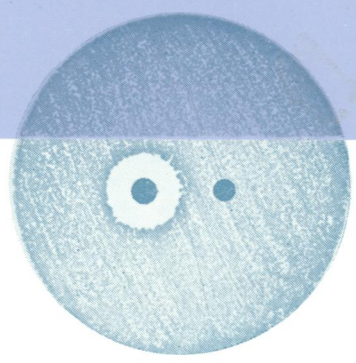
The Journal of the Association of Clinical Pathologists

Vol. 23, No. 9, December 1970

M

*E. coli*: 18 hours' incubation  
colistin/sulphamethoxazole  
Indifference

*Pr. mirabilis*: 18 hours' incubation  
colistin/sulphamethoxazole  
Synergy



A

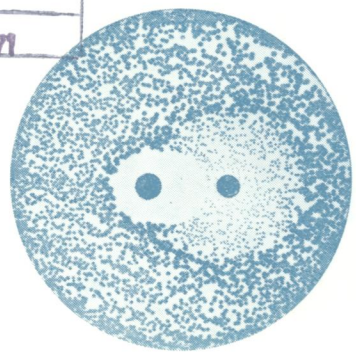
B

JTC:	HT 2
INDEXER:	31
VOL-ISS:	23-9
DATE:	DEC 7
PRIORITY:	/

NATIONAL LIBRARY OF MEDICINE
RECD. APR 15 1971
INDEX APR 22 1971
INFUT MAY 4 1971

*Kl. aerogenes*: 42 hours' incubation  
colistin/sulphamethoxazole  
Synergy

*Kl. aerogenes*: 42 hours' incubation  
colistin/sulphamethoxazole  
Synergy



D

Results with the standard method. Colistin discs on the left of each plate, trimethoprim or sulphamethoxazole on the right. See Fig. 1, page 759.

INDEX MEDICUS

J Clin Pathol: first published as on 1 December 1970. Downloaded from <http://jcp.bmj.com/> on November 29, 2021 by guest. Protected by copyright.