

READING ROOM

W/ 50 5896 *

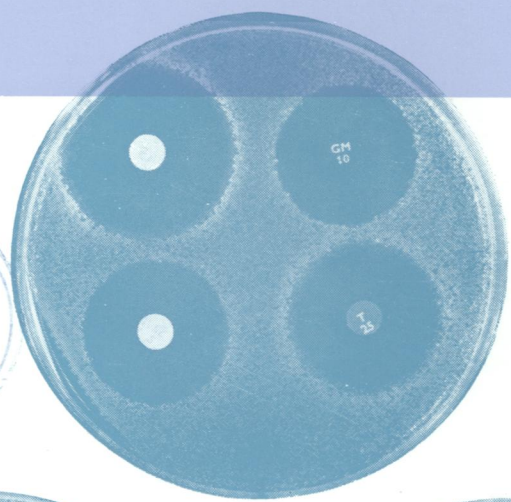
CONTAINS INDEX

Journal of Clinical Pathology

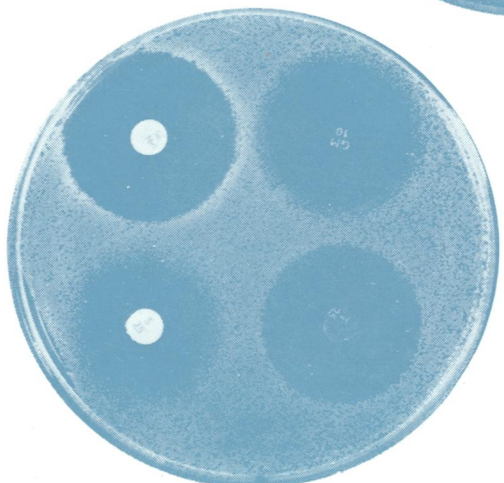
The Journal of the Association of Clinical Pathologists

Vol. 24, No. 9, December 1971

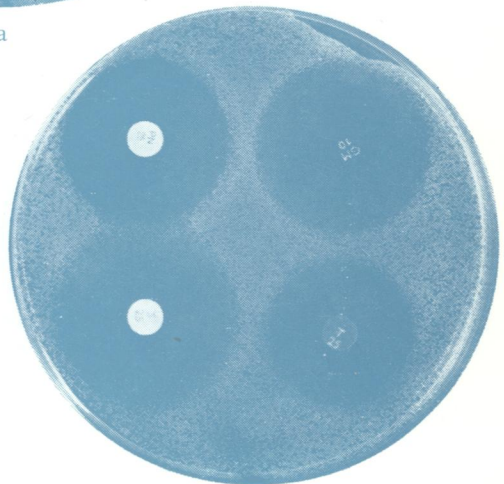
RECEIVED
MAR 1 1972
National Library
of Medicine



a



b



c

Effect of medium on clarity of zone edges. All plates are inoculated with *E. coli* and discs contain (upper right) gentamicin 19 µg, (lower left) streptomycin 25 µg, (lower right) tetracycline 25 µg. The plates contain: a WST, b DST, and c MH. See Fig. 2 page 783.

J Clin Pathol: first published as on 1 December 1971. Downloaded from <http://jcp.bmj.com/> on April 22, 2021 by guest. Protected by copyright.