

31  
No 5896

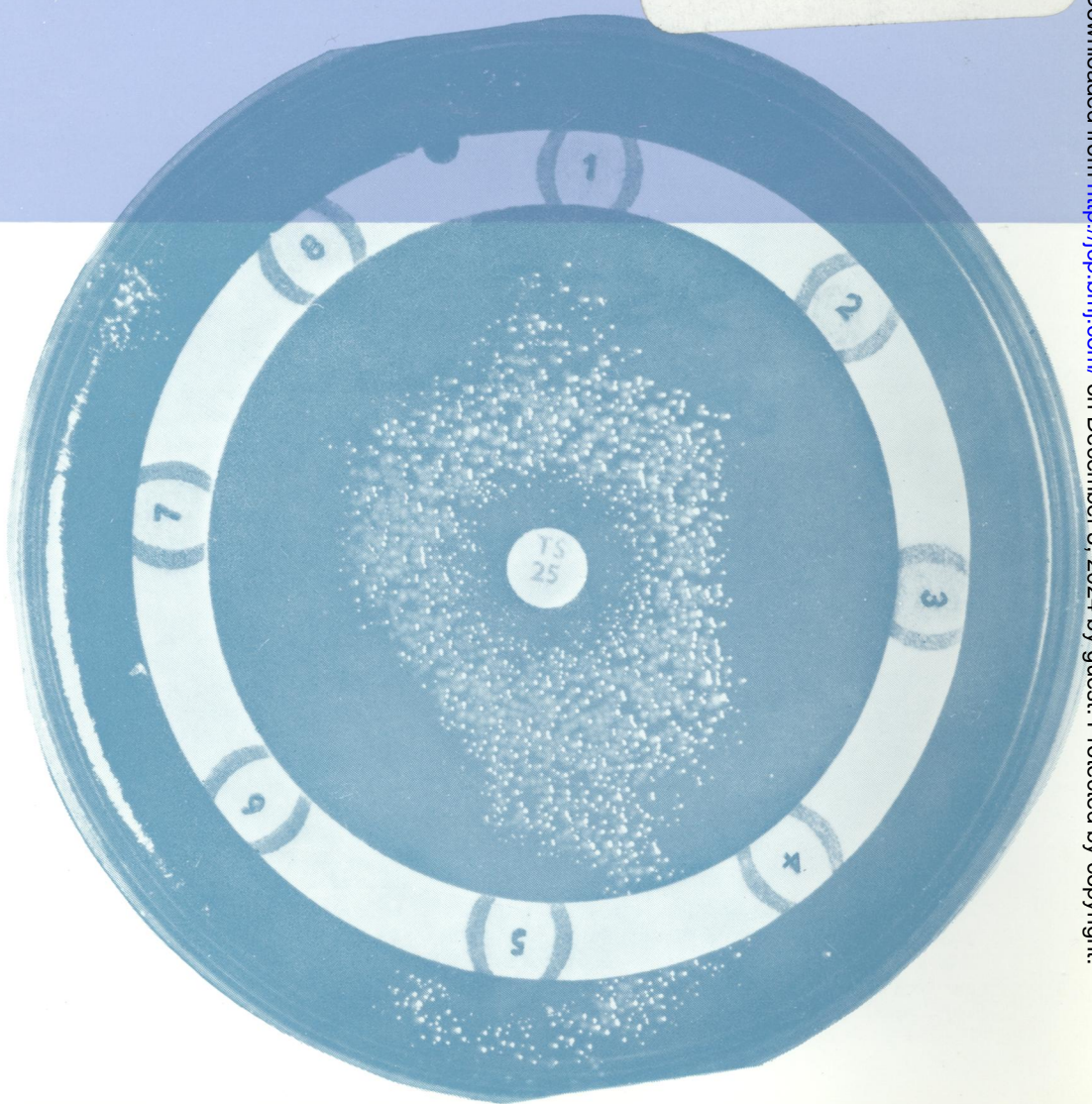
READING ROOM

# Journal of Clinical Pathology

*The Journal of the Association of Clinical Pathologists*

Vol. 25, No. 11, November 1972

NATIONAL LIBRARY  
 JAN 10 1973  
 OF MEDICINE



*Sensitivity plate identical to Fig. 1 but a disc impregnated with cotrimoxazole has been placed centrally. The effect of the chance application of this disc has been to stimulate growth around it and so apparently to make the test readable. See Fig. 4, page 978*