

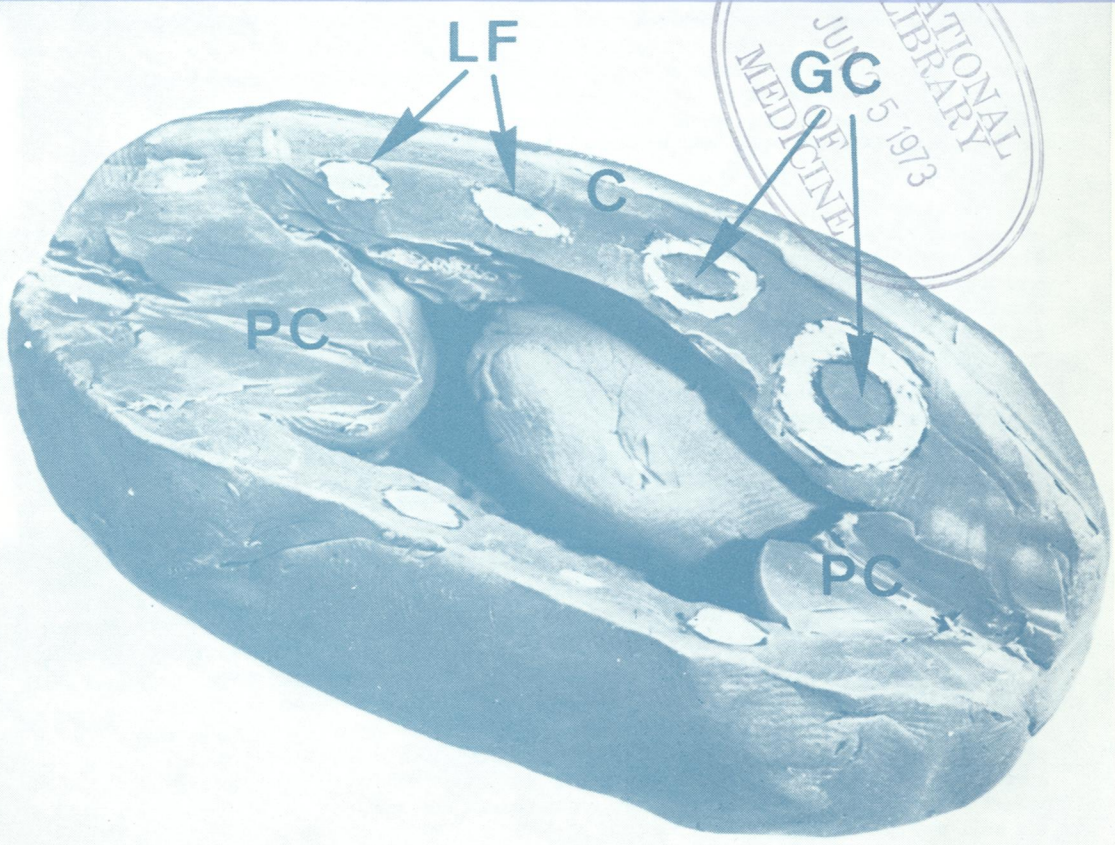
705894

READING ROOM

Journal of Clinical Pathology

The Journal of the Association of Clinical Pathologists

Vol. 26, No. 5, May 1973



NATIONAL LIBRARY
 JUN 5 1973
 MEDICAL LIBRARY

Diagrammatic three-dimensional model of a lymph node (J. Oort) showing the cortical (C), the paracortical area (PC), lymphoid follicles (LF), and germinal centres (GC). The medulla is the central space shown in this model. See Fig. 16, p. 324

J Clin Pathol: first published as on 1 May 1973. Downloaded from <http://jcp.bmj.com/> on December 2, 2021 by guest. Protected by copyright.