

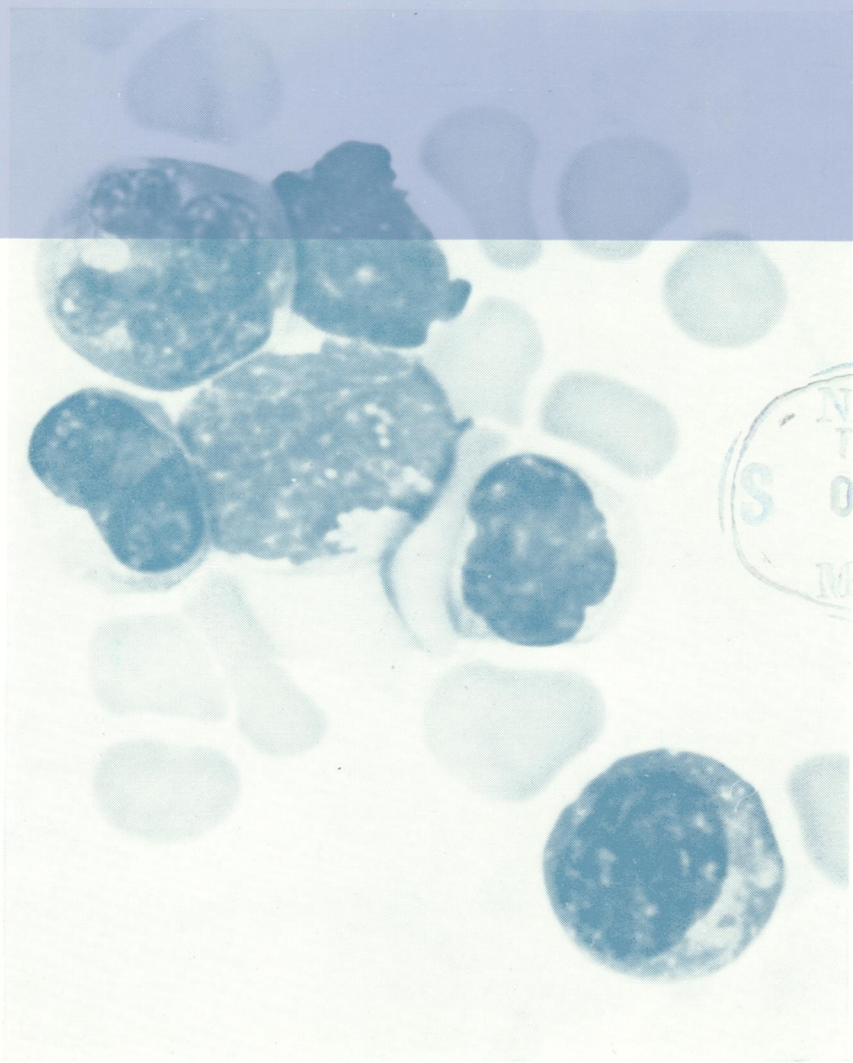
J05896

COPY 2

# Journal of Clinical Pathology

*The Journal of the Association of Clinical Pathologists*

Vol. 27, No. 9, September 1974



NATIONAL  
LIBRARY  
S OCT 22 1974  
OF  
MEDICINE

After antigenic  
stimulus. Fraction  
1. Cells with  
irregularly shaped  
nucleus. See fig 19,  
page 748.

J Clin Pathol: first published as on 1 September 1974. Downloaded from <http://jcp.bmj.com/> on December 2, 2023 by guest. Protected by copyright.