

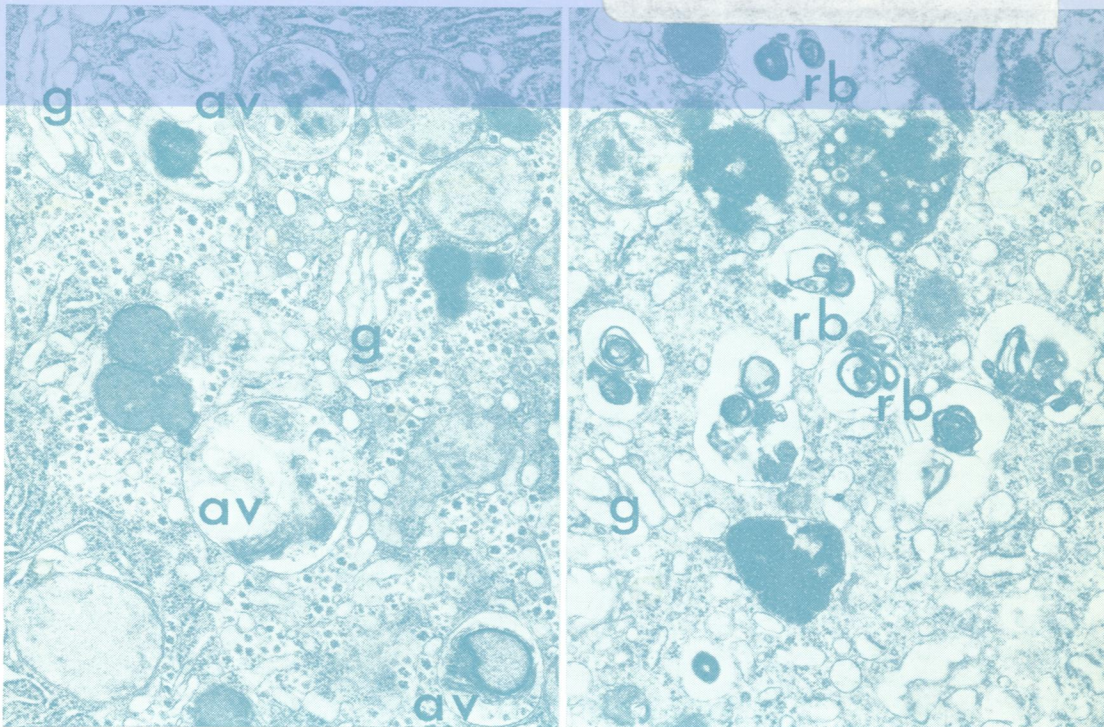
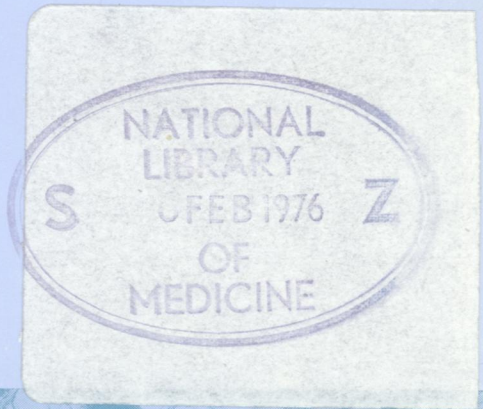
W1
705896

COPY 2

Journal of Clinical Pathology

The Journal of the Association of Clinical Pathologists

Vol. 29, No. 1, January 1976



(Left) Case 1, immediately following hyperthermia. Portion of a parenchymal cell showing autophagic vacuoles (av) in which enveloped organelles are recognizable. There is dilatation of Golgi elements (g). $\times 20\ 000$. (Right) Case 1, 24 hours after hyperthermia. Autophagic vacuoles in the parenchymal cell cytoplasm are mostly at the residual body stage (rb). Golgi components (g) are dilated $\times 20\ 000$. See figs 4 and 5, page 4