

W/ J05896

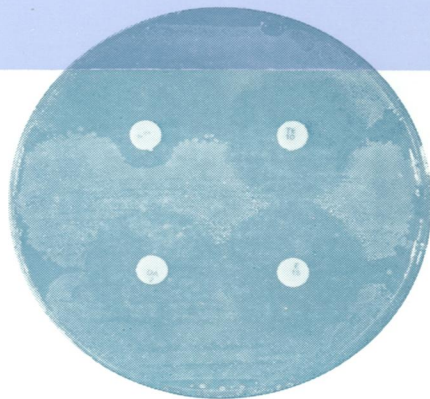
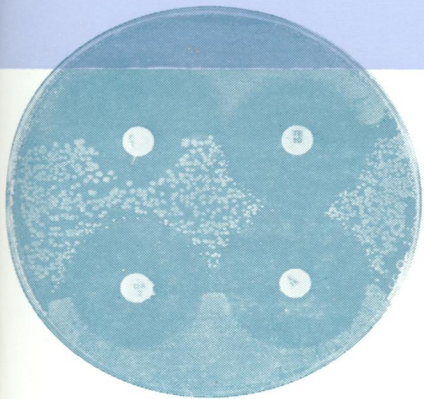
copy 2

Journal of Clinical Pathology

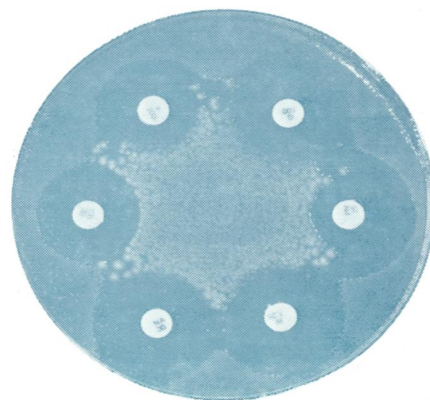
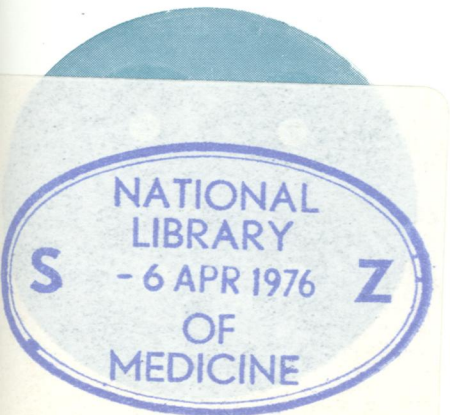
The Journal of the Association of Clinical Pathologists

Vol. 29, No. 3, March 1976

J Clin Pathol: first published as on 1 March 1976. Downloaded from <http://jcp.bmj.com/> on February 2, 2023 by guest. Protected by copyright.



(Left) Primary test made from a swab bearing pus. The inoculum is lighter than that of the control but the result is clear. (Right) Secondary test on the same organism. The plate was inoculated by applying a small loop of an overnight broth culture and spreading this with a dry swab.



Primary sensitivity tests on urine done by (left) the conventional four-disc Stokes method, and (right) using a rotary plater and six discs. See figs 2 and 3, page 182.