

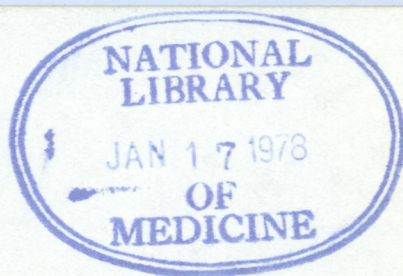
W1  
Jo 5896

DR

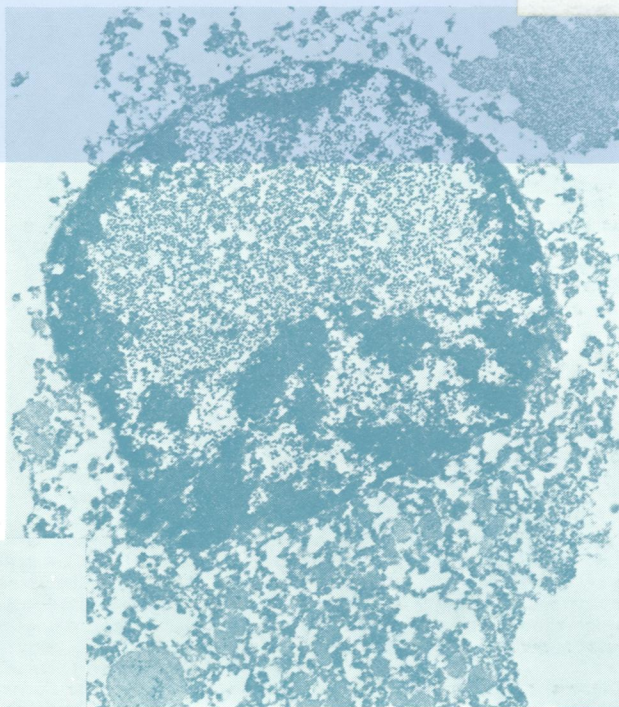
# Journal of Clinical Pathology

*The Journal of the Association of Clinical Pathologists*

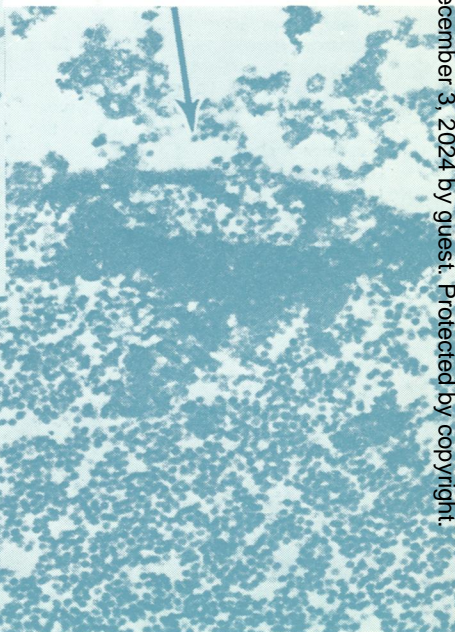
Vol. 30, No. 11, November 1977



(Left) Smear of urinary sediment showing urothelial cells containing basophilic intranuclear inclusions. Papanicolaou stain  $\times 770$



(Right) Part of the nucleus at higher magnification, showing discrete virus particles, 35 nm diameter, some of which are aligned in short chains. Where the nuclear membrane is ruptured a few particles can be seen in the cytoplasm (arrow).  $\times 32\ 000$



(Centre) Electron micrograph of inclusion-bearing cell identified by light microscopy of stained smears of the urinary sediment. The nucleus contains numerous virus particles. Uranyl acetate  $\times 14\ 000$

