

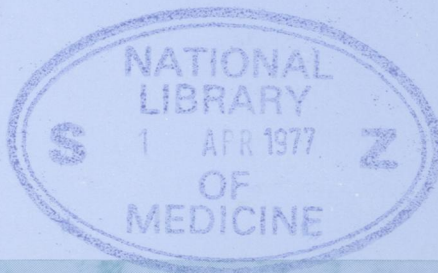
Ref
w1
J05896

READING
ROOM

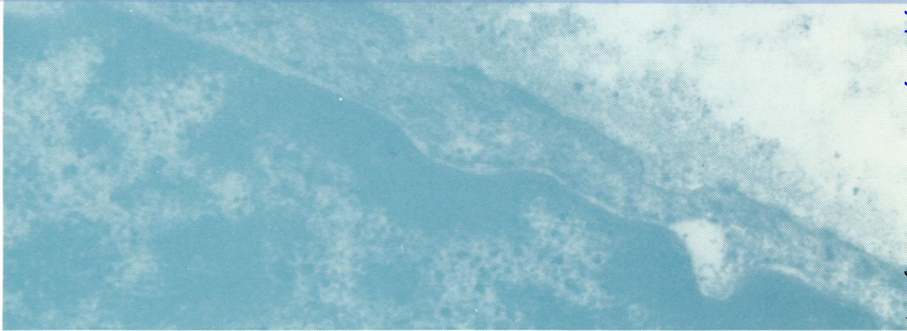
Journal of Clinical Pathology

The Journal of the Association of Clinical Pathologists

Vol. 30, No. 3, March 1977



fibriiform adenocarcinoma of hard palate. Cell bordering pseudolumen. Microvilli are absent and a concentration of amorphous material resembles a basal lamina. The cytoplasm contains numerous loosely arranged filaments of the order of 75 A in diameter. Occasional denser zones of the basal plasma membrane suggest the formation of hemidesmosomes. Many fine particles are consistent with glycogen. x 48 750. See Fig. 2, p. 197



fibriiform adenocarcinoma of hard palate. Cell bordering true lumen showing well developed microvilli and many loose bundles of fine filaments, 40 to 50 A in diameter. x 37 500. See Fig. 4, p. 198

