

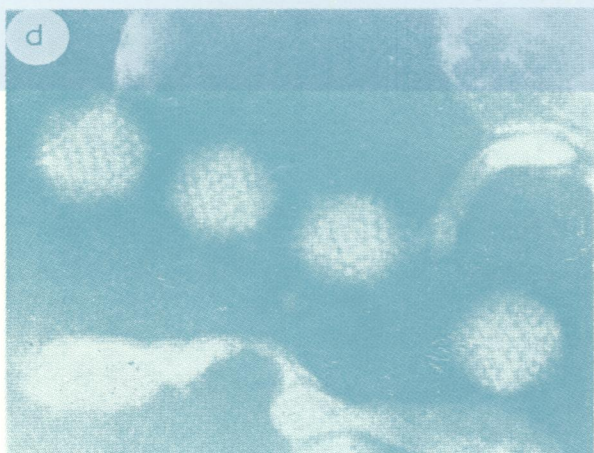
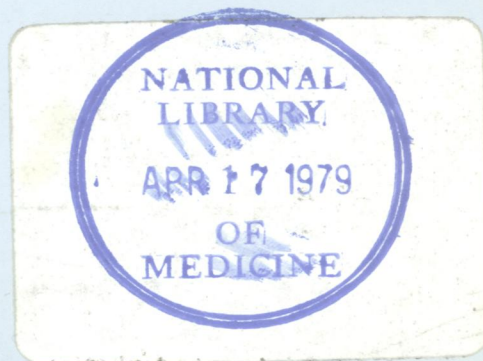
WI
JO
5896

DR

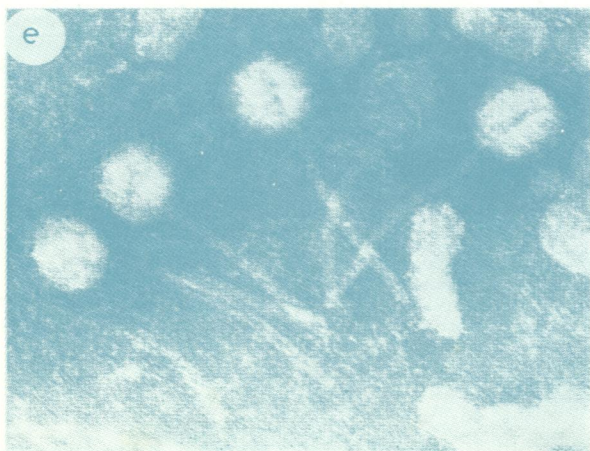
Journal of Clinical Pathology

The Journal of the Association of Clinical Pathologists

Vol. 32, No. 1, January 1979



(Left) Adenovirus type 3 from stool cultured in cells. See Fig 1d, page 3



(Above) Corona virus from stool. Note long surface projections with spherical knob at end. See Fig. 2, page 4

(Left) Tailed bacteriophages from stool. See Fig. 3, page 4