

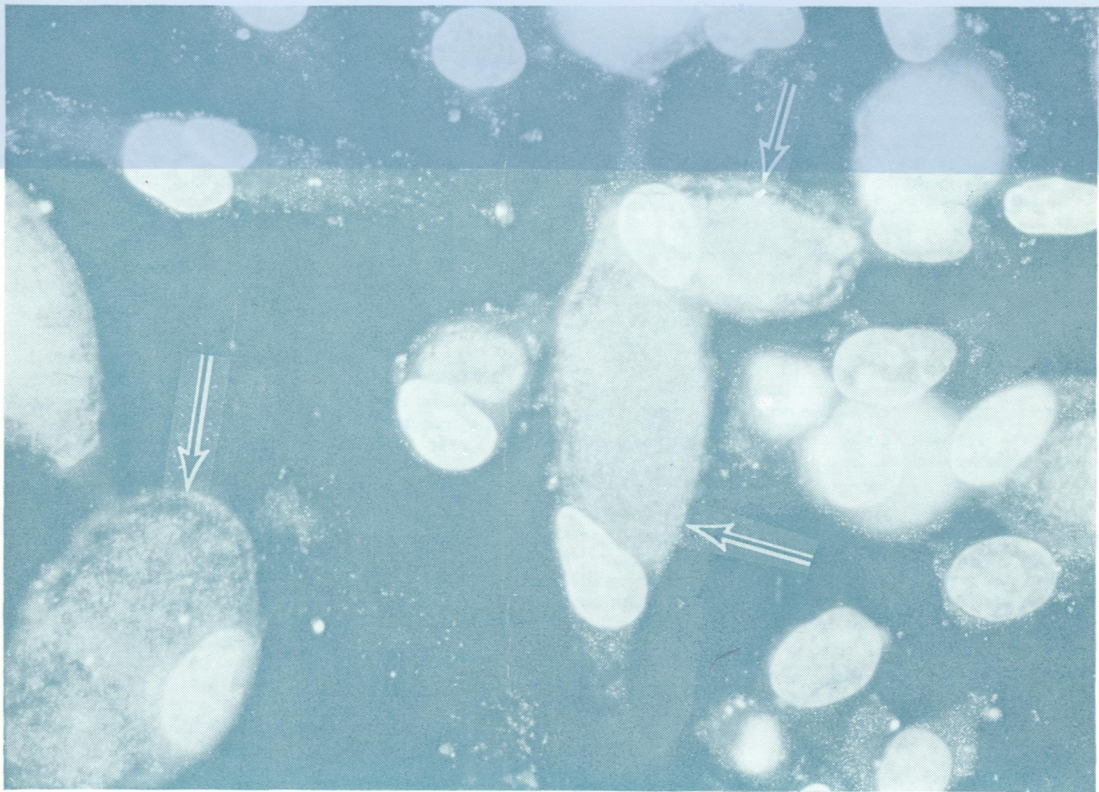
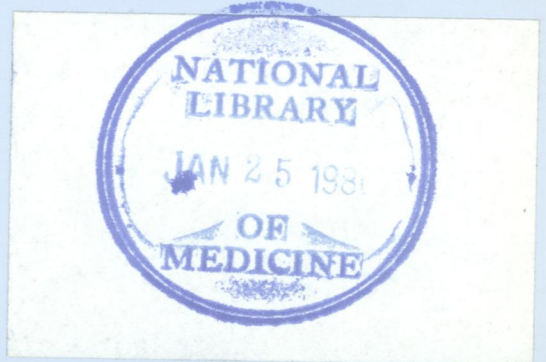
WI
Jo
5896

DR

Journal of Clinical Pathology

The Journal of the Association of Clinical Pathologists

Vol. 32, No. 11, November 1979



DAPI stained HeLa 229 cells after infection with C. trachomatis IOL 238 for 60 hours. The chlamydial inclusions are now larger and move brightly fluorescent due to the presence of large numbers of the DNA rich elementary bodies, $\times 400$. See Figure 4, page 1158.