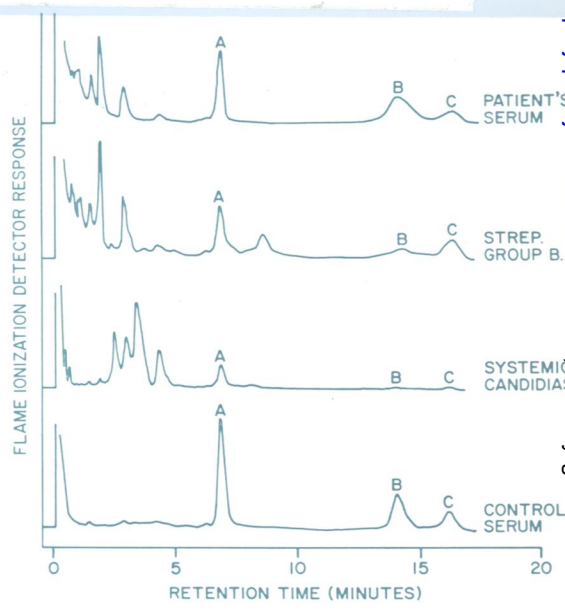
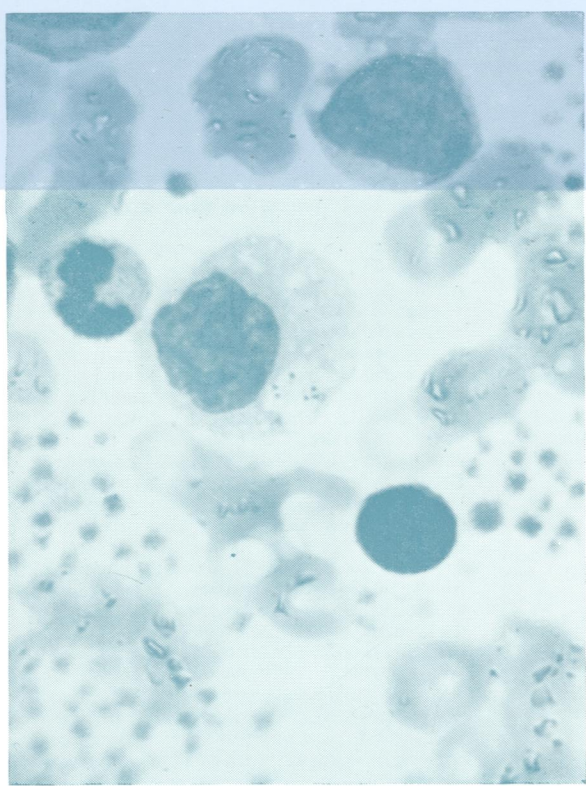
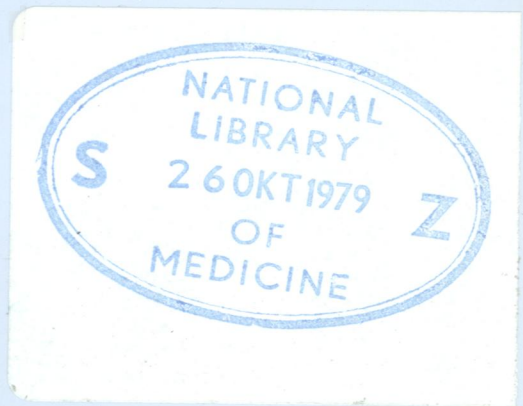


W1
JO 5896

Journal of Clinical Pathology

The Journal of the Association of Clinical Pathologists

Vol. 32, No. 8, August 1979



(Left) Wright-Giemsa stain of the buffy coat shows six coccoïd bodies within a large monocyte, shown in the centre of the picture. (Right) Gas-liquid chromatograms of the patient's serum, streptococcus group B cells suspension, and one sample each from patients with systemic candidiasis and a normal control. Note the distinctive pattern of the patient's serum, which closely resembles that of streptococcus group B cells and is easily distinguishable from other conditions. See Fig. 1 page 761 and Fig. 2 page 762.

J Clin Pathol: first published as on 1 August 1979. Downloaded from <http://jcp.bmj.com/> on December 4, 2021 by guest. Protected by copyright.