

W1
JA 5896

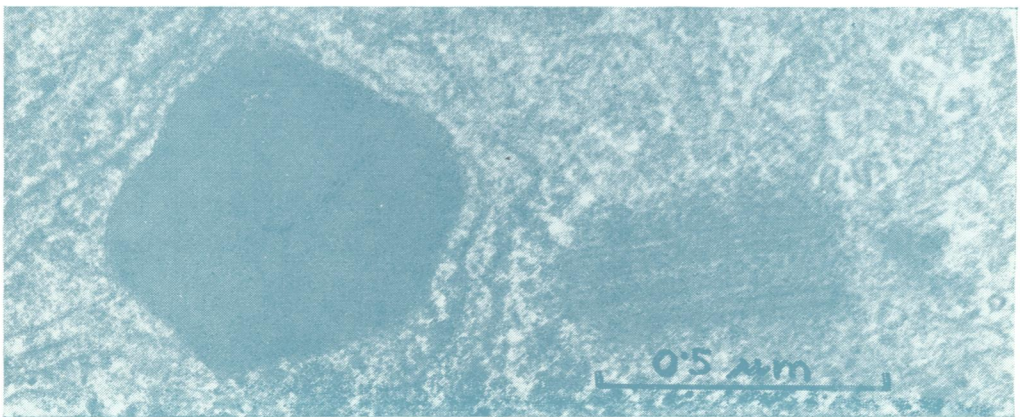
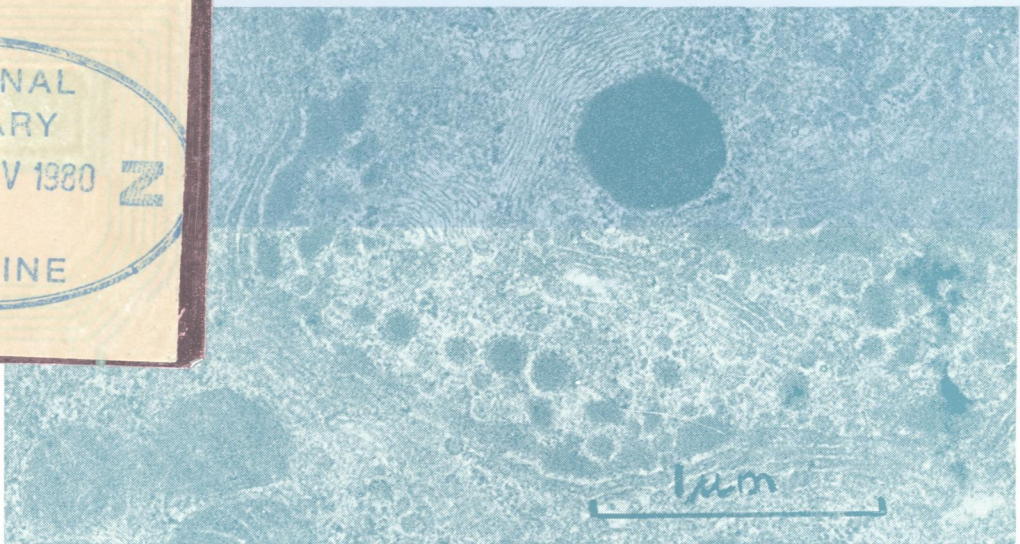
e3

Journal of Clinical Pathology

The Journal of the Association of Clinical Pathologists

Vol 33, No 10, October 1980

NATIONAL
LIBRARY
S 11 NOV 1980 Z
OF
MEDICINE



Aspects of Russel's bodies. (Above) Golgi apparatus with numerous dense vesicles, fibril bundles, and one large paracrystalline granule. (Below) Detail of a polygonal granule. The crystalline array is probably lost as a result of the fixation and embedding procedures. See Fig. 10, page 943.