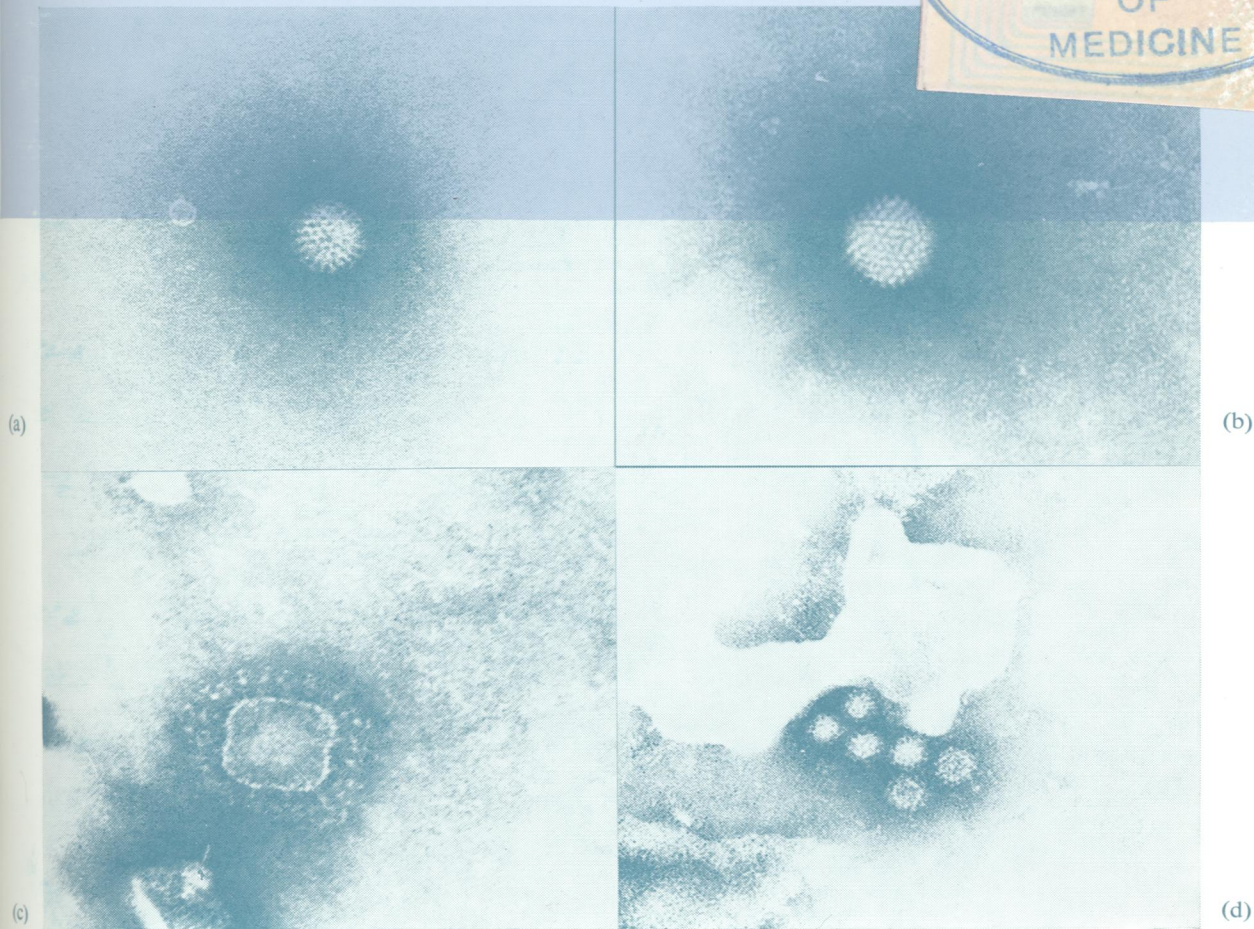
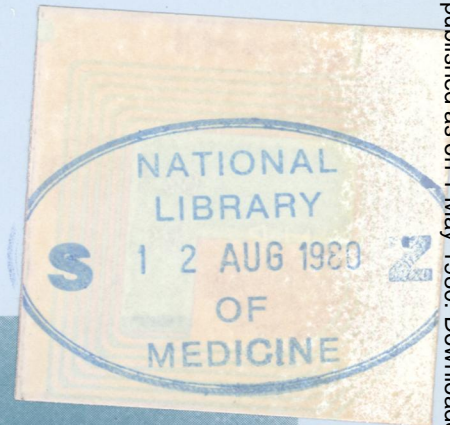


W1
J0 5896

Journal of Clinical Pathology

The Journal of the Association of Clinical Pathologists

Vol 33, No 5, May 1980



Viruses in faecal extracts concentrated by lyphogel: (a) smooth rotavirus particle; (b) single adenovirus; (c) coronavirus; (d) group of antibody-coated small round virus particles (SRV). All negatively stained with 3% PTA \times 150 000. See page 485.

J Clin Pathol: first published as on 1 May 1980. Downloaded from <http://jcp.bmj.com/> on August 18, 2022 by guest. Protected by copyright.