

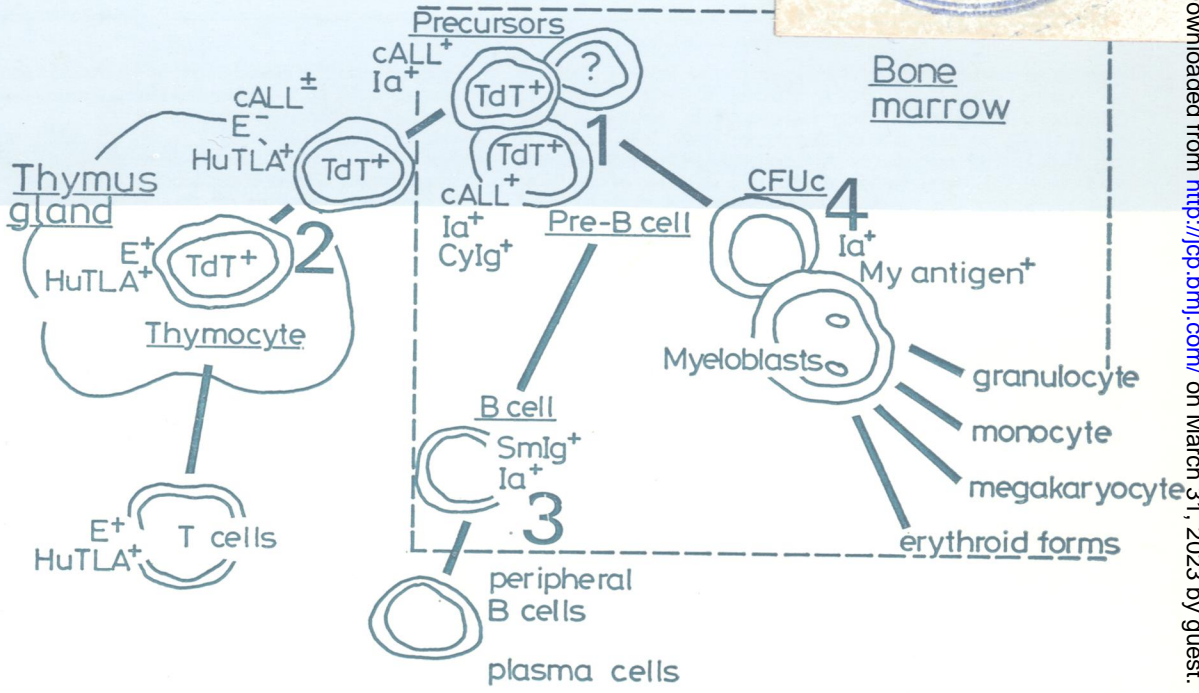
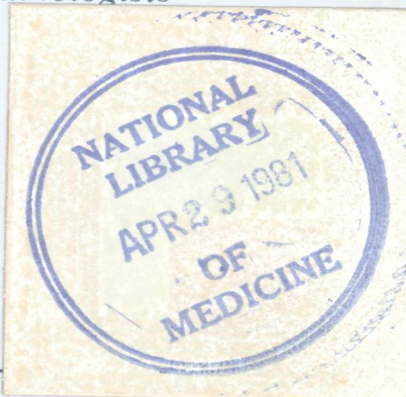
REF
W1
J05896

C.2

Journal of Clinical Pathology

The Journal of the Association of Clinical Pathologists

Vol 34, No 3, March 1981



The main leukaemic phenotypes and the corresponding normal precursor cell types. Note that normal TdT⁺ pre-B cells (cytoplasmic immunoglobulin positive) are extremely rare while approximately 30% of common ALL cases are pre-B (TdT⁺, CyIgM⁺). 1. Common ALL and pre-B ALL: both are cALL⁺, Ia⁺, TdT⁺, SmIg⁻, HuTLA⁻, My⁻. In addition, pre-B ALL blast cells have cytoplasmic IgM. 2. Two forms of thymic ALL: both are HuTLA⁺, TdT⁺, Ia⁻, SmIg⁻, My⁻. The rare 'early' forms are E⁻ and weakly cALL⁺; the typical Thy-ALL is E⁺, cALL⁺. 3. B-ALL: SmIg⁺, Ia⁻, TdT⁺, E⁻, HuTLA⁻, My⁻, cALL⁻. 4. AML: My⁺, Ia⁻, TdT⁻, E⁻, HuTLA⁻, SmIg⁻, cALL⁻. 5. The phenotypic characteristics and leukaemic equivalents of the human pre-lymphoid, presmyeloid pluripotential stem cells are unknown. See Fig. 1, page 227.

J Clin Pathol: first published as on 1 March 1981. Downloaded from <http://jcp.bmj.com/> on March 31, 2023 by guest. Protected by copyright.