

REF
W1
TO 5896

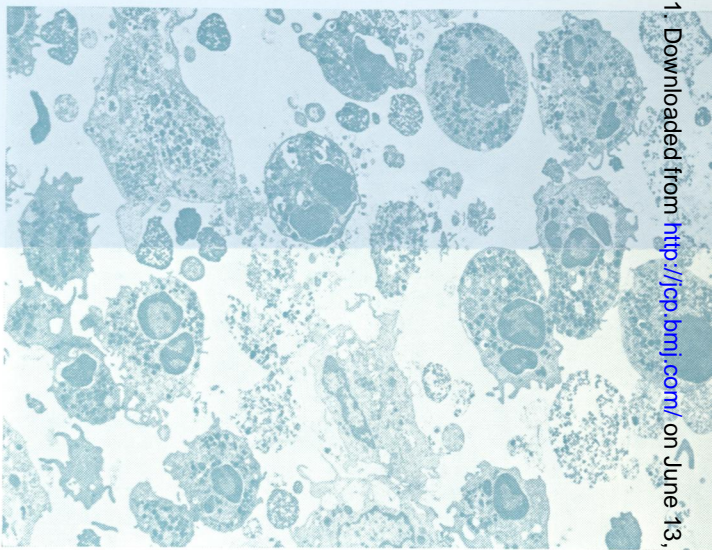
C12

Journal of Clinical Pathology

The Journal of the Association of Clinical Pathologists

Vol 34, No 9, September 1981

NATIONAL
LIBRARY
13 OCT 1981
OF
MEDICINE



Above Low power electronmicrograph of semen from a patient with leucospermia. The leucocytes are evenly distributed throughout the specimen. $\times 2000$
Left Low power electronmicrograph showing the random orientation of sperm within a section. $\times 2000$
See Figs 2 and 3, page 1008.