



Broadsheets prepared by the Association of Clinical Pathologists

Just Published

131 Hirsute women: Should they be investigated? 1991 JH BARTH

Recent Publications

130 Gross examination of bladder specimens 1991 MC PARKINSON, C FISHER

129 Isolation and identification of *Listeria monocytogenes* 1991 KG KERR, RW LACEY

128 Laboratory methods for diagnosing cryptosporidiosis 1991 DP CASEMORE

127 Measurement of catecholamines and their metabolites in urine 1991 C WEINKOVE

Other Broadsheets are still available for purchase

126 Examination of specimens of the larynx 1990
L MICHAELS

125 Bacteriological diagnosis of diphtheria 1990
K BROOKS, DHM JOYNSON

124 Examination of faeces for bacterial
pathogens 1990 SJ PEDLER, KE ORR

123 Examination of lung specimens 1990 AR GIBBS,
RME SEAL

122 Platelet function testing 1989 RA HUTTON,
CA LUDLAM

121 Investigation of meningococcal disease 1989
KAV CARTWRIGHT, DM JONES

120 Guide to diagnosis of inborn errors of metabolism in
district general hospitals 1989 ANNE GREEN

119 Simple tests to detect poisoning 1988 B WIDDOP

118 Laboratory investigation of paraproteinaemia 1988
PAMELA G RICHES, JR HOBBS

117 Detection of antibodies to double stranded DNA and
extractable nuclear antigen 1987 DA ISENBERG,
PJ MADDISON

116 Examination of breast specimens 1987
WV BOGOMOLETZ, JD DAVIES

115 Staining of normal and pathological elastic fibres
1986 SL MERA, JD DAVIES

Earlier Broadsheets may still be available from the author. A full list can be obtained from the Publications Secretary, Association of Clinical Pathologists, 221 Preston Road, Brighton BN1 6SA.

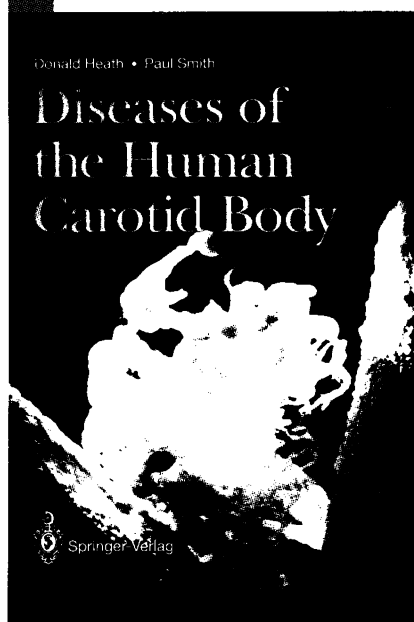
Prices

INLAND One copy, £2.50; 2-10 copies (of any one broadsheet or reprint), £2.00 each; 11-100 copies (of any one), £1.75 each; 101 plus copies (of any one), price to be agreed; Authors (over 50 free copies), £1.25 each.

OVERSEAS One copy, \$6.75; 2-10 copies (of any one broadsheet or reprint), \$5.25; 11-100 copies (of any one), \$3.75; 101 plus copies (of any one), price to be agreed.

Authors (over 50 free copies), \$2.25. Prices include postage but air mail will be charged extra. Trade discount 10%. All orders (and all changes of address of regular subscribers) should be sent to the Publishing Manager *Journal of Clinical Pathology*, BMJ Publishing Group, BMA House, Tavistock Square, London WC1H 9JR.

Well-illustrated and easy-to-use references



1992. XII, 205 pp. 136 figs. 33 tabs.
Hardcover DM 254,-
ISBN 3-540-19687-0

Help is at hand for histopathology laboratories in this unique book. It gives the first comprehensive account of naked eye appearances at post mortem, and of the histological and ultrastructural features of the normal variants and the various pathological conditions of the *human* carotid bodies. The most recent findings are gathered here; they include the content and distribution of peptides in the human carotid body and the role of the carotid body in sodium metabolism.

More than twenty years of research by the authors into carotid body disease is condensed into this book – a treasure chest of knowledge that will open new vistas for every pathologist.

K. Kim, Medical College of Ohio, Toledo; **B. Naylor**, University of Michigan, Ann Arbor

Practical Guide to Surgical Pathology with Cytologic Correlation

A Text and Color Atlas

1992. XIII, 359 pp. 397 figs.
in 806 parts, 777 in full color.
Hardcover DM 240,-
ISBN 3-540-97538-1

This unique text and color atlas comprehensively examines every organ system. Color slides and concise clinicopathologic correlations are paired with corresponding cytology and histopathology; important gross and radiologic pictures are also shown. High-quality cytologic, histopathologic and radiographic illustrations facilitate accurate diagnosis. Organized for quick and authoritative reference, this volume is an ideal tool for busy clinical pathologists and surgeons.

Distribution rights for Japan:
Igaku Shoin, Tokyo

K. Kayser, Heidelberg

Analytical Lung Pathology

1992. X, 394 pp. 40 figs.
Hardcover DM 198,-
ISBN 3-540-54263-9

Fast and detailed access to information about both common and rare lung diseases make this the ideal reference for lung pathologists. Under each disease there is a uniformly structured presentation of its definition, epidemiology, pathophysiology, clinical prognosis, radiology, gross and microscopic pathology, histology, descriptors, special stains, hallmark of diagnosis and differential diagnosis.

P. A. Hall, **D. A. Levison**, **N. A. Wright**, London (Eds.)

Assessment of Cell Proliferation in Clinical Practice

1992. XVIII, 210 pp. 36 figs. 9 tabs.
Hardcover DM 148,-
ISBN 3-540-19700-1

This book gives a balanced view of the advantages and disadvantages of the different methods currently available for assessing cell proliferation. Experts for each method critically review the techniques and the ways in which they may be applied to clinical material.

J. W. Oosterhuis, Rotterdam; **H. Walt**, University of Zurich; **I. Damjanov**, Thomas Jefferson University, Philadelphia, PA (Eds.)

Pathobiology of Human Germ Cell Neoplasia

1991. XII, 195 pp. 48 figs. 10 tabs.
(Recent Results in Cancer Research, Vol. 123) Hardcover DM 138,-
ISBN 3-540-53928-X

Prices are subject to change without notice.

