

W1 J05896

NO.12

1997

02-----SEQ: J16880000

JOURNAL OF CLINICAL
PATHOLOGY

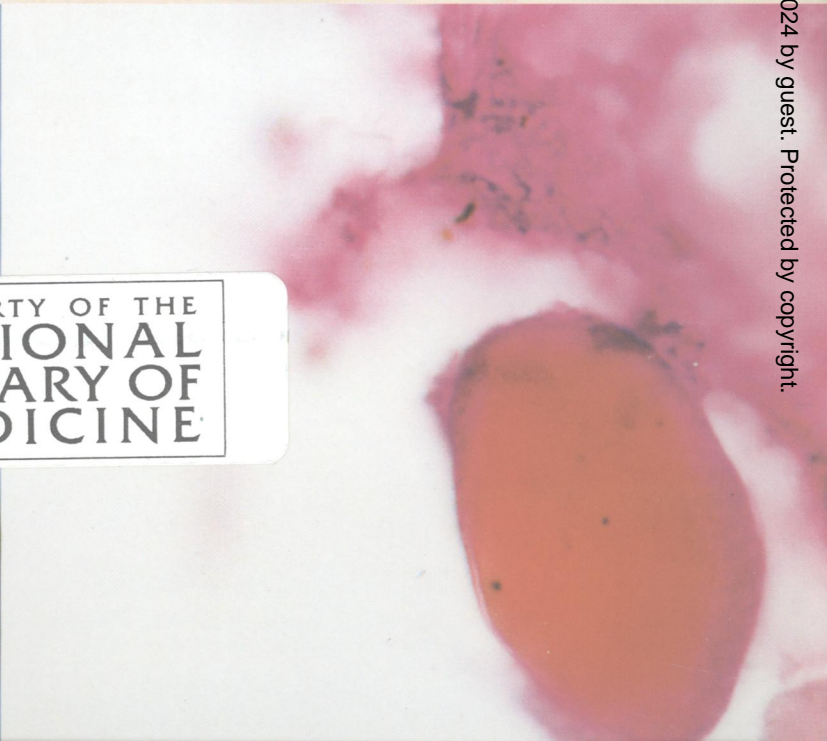
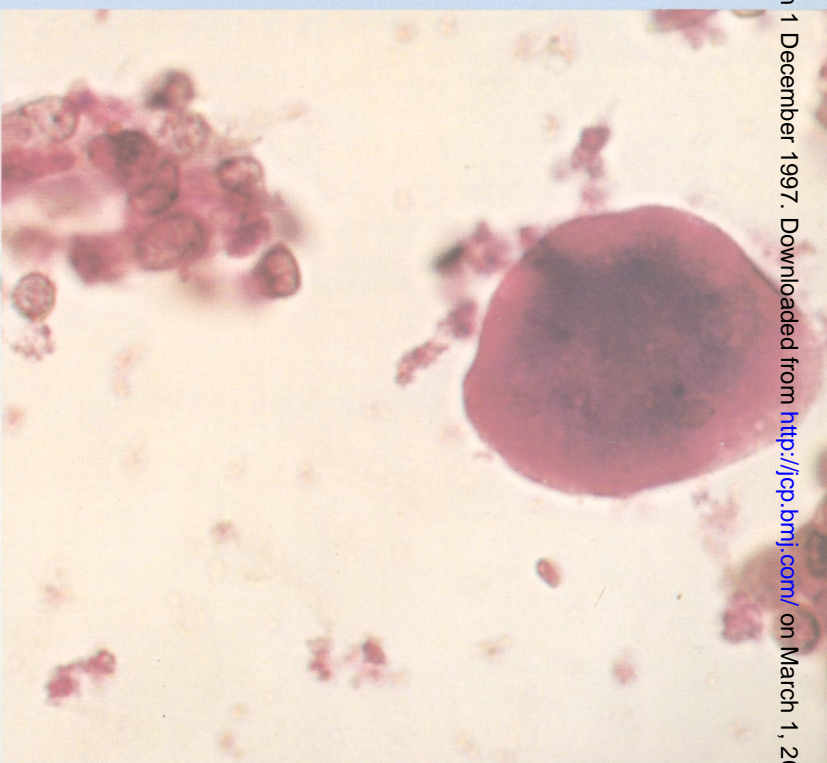
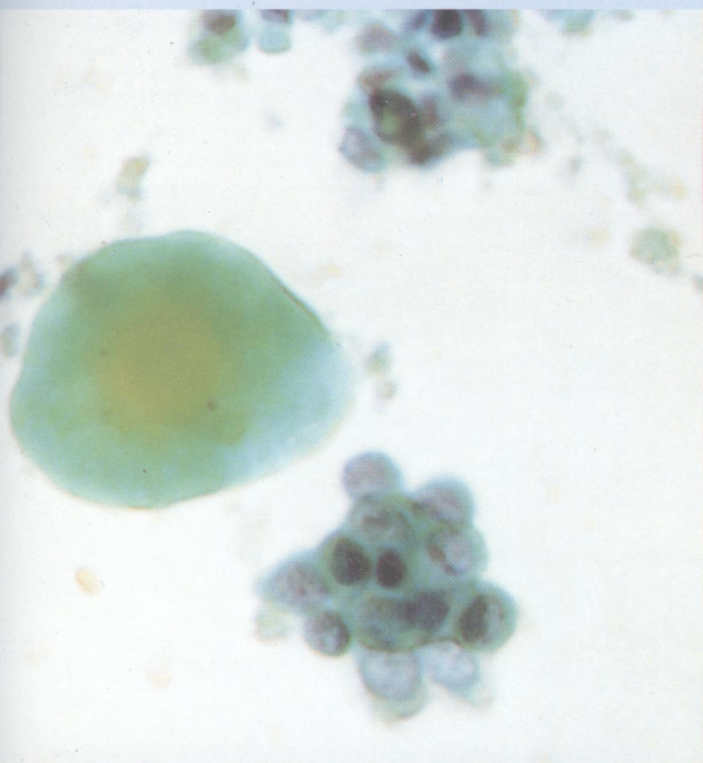
01/20/98

December 1997 Vol 50 No 12

JCP

JOURNAL OF CLINICAL PATHOLOGY

The Journal of the Association of Clinical Pathologists



PROPERTY OF THE
NATIONAL
LIBRARY OF
MEDICINE

BMJ
Publishing
Group

J Clin Pathol: first published as on 1 December 1997. Downloaded from <http://jcp.bmj.com/> on March 1, 2024 by guest. Protected by copyright.