

W1 J05896

NO.2

1997

SEQ: J16880000

JOURNAL OF CLINICAL
PATHOLOGY

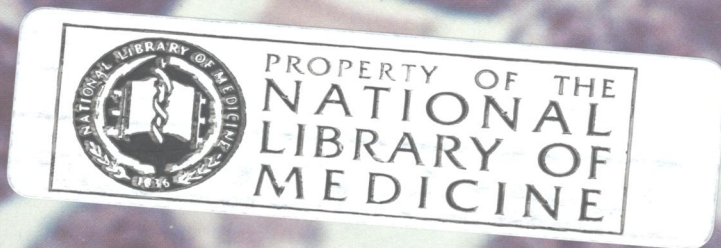
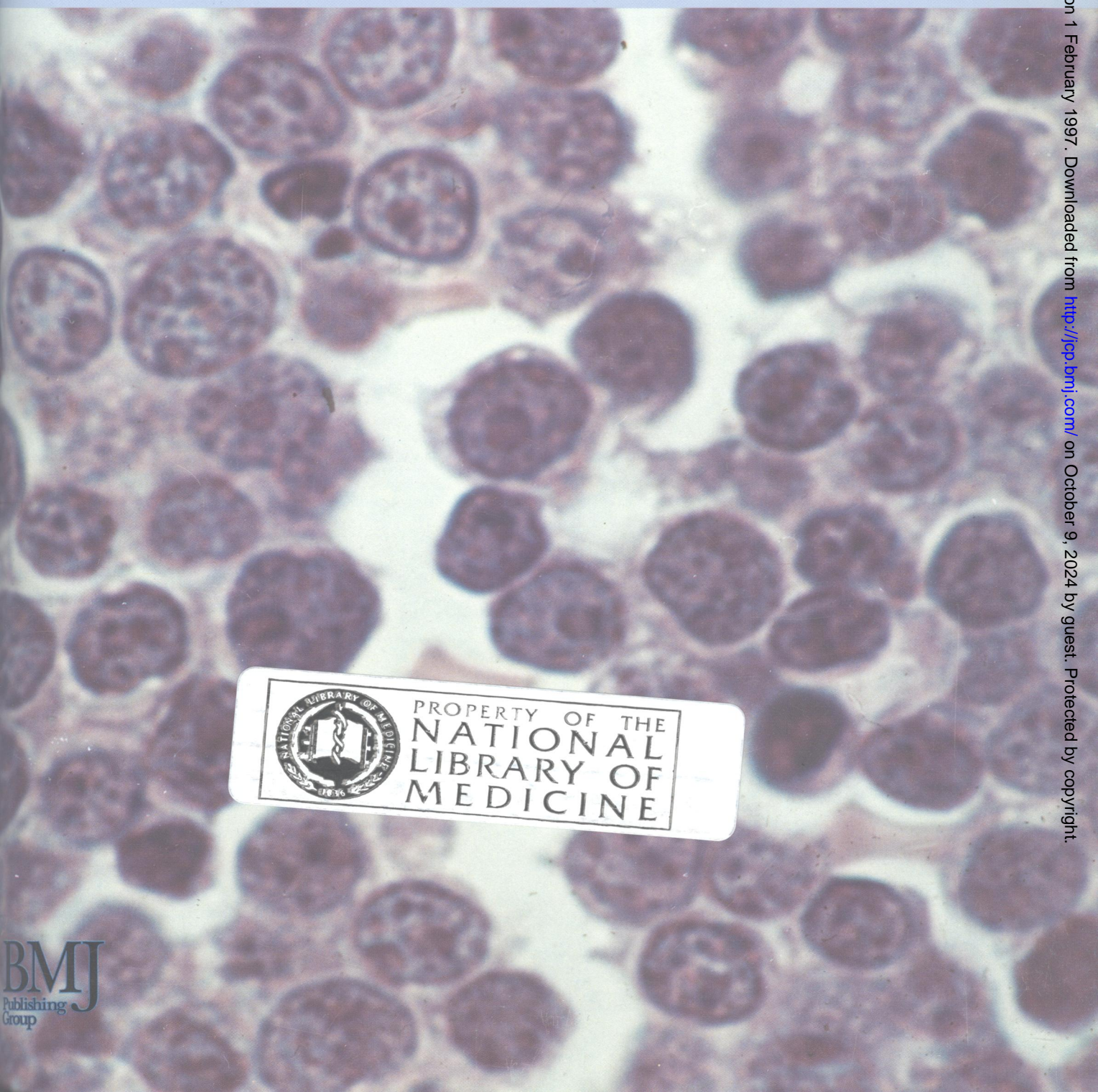
03/20/97

February 1997 Vol 50 No 2

JCP

JOURNAL OF CLINICAL PATHOLOGY

The Journal of the Association of Clinical Pathologists



BMJ
Publishing
Group

J Clin Pathol: first published as on 1 February 1997. Downloaded from <http://jcp.bmj.com/> on October 9, 2024 by guest. Protected by copyright.