

# JCP

JOURNAL  
OF CLINICAL  
PATHOLOGY



October 1999 Vol 52 No 10

#### Leaders

- 713 Detection of drug misuse—an addictive challenge *J H Gallowsay, I D Marsh*  
719 Biological consequences of the BCR/ABL fusion gene in humans and mice  
*M Y Gordon*

#### Viewpoint

- 723 Next of kin clinics: a new role for the pathologist *P Vánezis, S Leadbeater*

#### Papers

- 725 Detection of telomerase in hepatocellular carcinomas using a PCR ELISA assay: comparison with hTR expression *S Ferlicot, V Paradis, D Dargère, G Monges, P Bedossa*  
730 Expression of CD44 on bile ducts in primary sclerosing cholangitis and primary biliary cirrhosis *S M Cruickshank, J Southgate, J I Wyatt, P J Selby, L K Trejdosiewicz*  
735 Vascular endothelial growth factor mRNA expression in minimal change, membranous, and diabetic nephropathy demonstrated by non-isotopic in situ hybridisation *E Bailey, M J Bottomley, S Westwell, J H Pringle, P N Furness, J Feehally, P E G Brechley, S J Harper*  
739 Autoimmune markers are undetectable in end stage idiopathic dilated cardiomyopathy *N de Leeuw, W J G Melchers, D J Ruiter, A L P Caforio, A H M M Balk, N de Jonge, J M D Galama*  
744 The effects of freeze drying and freeze drying additives on the prothrombin time and the international sensitivity index *L Poller, M Kcown, S A Shepherd, G R Shiach, S Tabear*  
749 Postmortem prolactin as a marker of antemortem stress *T J Jones, M J Halloworth*  
752 Age related prevalence of hepatitis G virus in South Africans *M J Mphahlele, S Aspinall, R Spooner, W F Carman*  
758 Oesophageal mesenchymal tumours: clinicopathological features and absence of Epstein-Barr virus *K Y Lam*  
761 Image sampling in static telepathology for frozen section diagnosis *V D Mea, P Cataldi, S Boi, N Finato, P D Palma, C A Beltrami*

#### Technical reports

- 766 Rapid detection of the factor V Leiden (1691G>A) and haemochromatosis (845G>A) mutation by fluorescence resonance energy transfer (FRET) and real time PCR *S-H Neoh, M J Brisco, F A Fargaira, K J Trainor, D R Turner, A A Morley*  
770 A latex slide agglutination test for rapid detection of antimyeloperoxidase antibody *K H Ko, S S Lee, J W M Lawton*

#### Short reports

- 773 Review of the clinical activity of medical microbiologists in a teaching hospital *S L Wooster, J A T Sandoe, J K Struthers, K W Loudon, M R Howard*  
776 The use of histological techniques for the demonstration of ion exchange resins *A J Chaplin*  
780 Severe hypoglycaemia caused by raised insulin-like growth factor II in disseminated breast cancer *E M Bessell, C Selby, I O Ellis*  
782 Association of HLA-DRB1 alleles with giant cell tumour of bone *S S Varanasi, N A Athanasou, I Briceno, S S Papiha, H K Datta*  
785 Differential expression of high molecular weight caldesmon in colorectal pericyptal fibroblasts and tumour stroma *H Nakayama, E Miyazaki, H Enzan*  
787 Follow up of women with borderline cervical smears as defined by national guidelines *M K Healey*

#### Miscellanea

- 789 Book reviews • CD-rom review • Notices • Correction • Instructions for authors • Best Practice articles

#### Pathology Interactive — user instructions

Inside back cover

55

Vol 52 No 10 Pages 713-793

JOURNAL OF CLINICAL PATHOLOGY

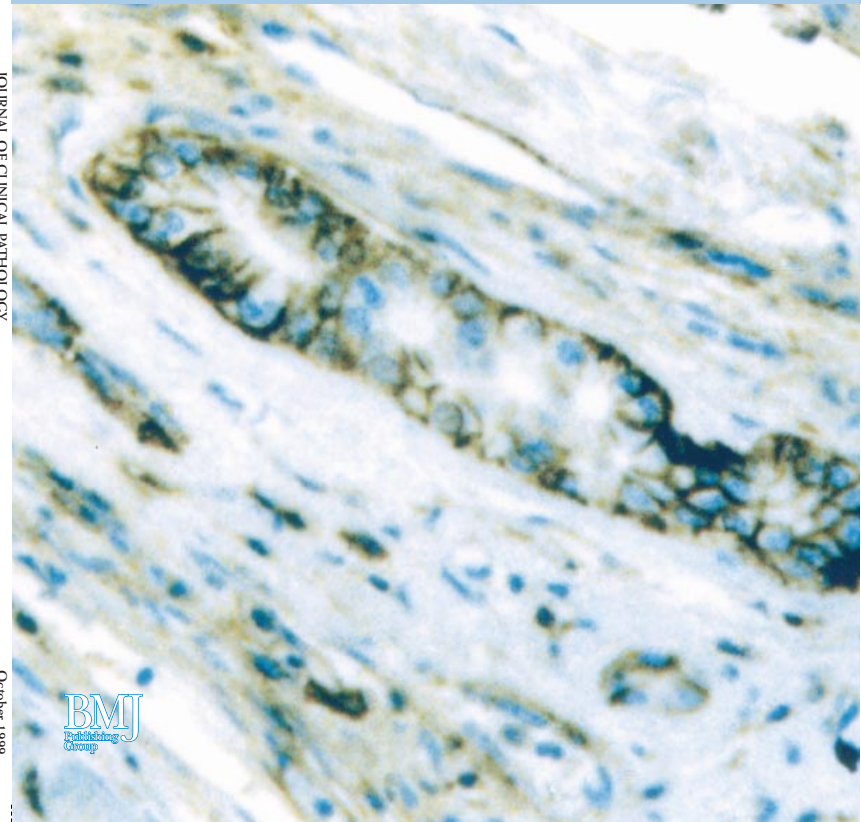
October 1999

# JCP

October 1999 Vol 52 No 10

JOURNAL OF CLINICAL PATHOLOGY

The Journal of the Association of Clinical Pathologists



BMJ  
Publishing Group