

Leader

89 ACP Best Practice No.155. Guidelines for handling oesophageal biopsies and resection specimens and their reporting *N B N Ibrahim*

Papers

- 95 Danish type gelsolin related amyloidosis: 654G-T mutation is associated with a disease pathogenetically and clinically similar to that caused by the 654G-A mutation (familial amyloidosis of the Finnish type) *C P J Maury, M Liljestrom, G Boysen, T Tornroth, A de la Chapelle, E Nurmiaho-Lassila*
- 100 Lack of mucin MUC5AC field change expression associated with tubulovillous and villous colorectal adenomas *R J Longman, J Douthwaite, P A Sylvester, D O'Leary, B F Warren, A P Corfield, M G Thomas*
- 105 Artefactual serum hyperkalaemia and hypercalcaemia in essential thrombocythaemia *M R Howard, S Ashwell, L R Bond, I Holbrook*
- 110 *Strongyloides stercoralis*: ultrastructural study of newly hatched larvae within human duodenal mucosa *D Dionisio, L I Manneschi, S di Lollo, A Orsi, A Tani, A Papucci, F Esperti, F Leoncini*
- 117 Unlinked anonymous HIV study of hospital patients and general practice attendees in Glasgow, 1991-1997 *J Johnston, S Cameron, M Stewart, D Goldberg, C Fletcher, W Smyth, G Codere*
- 122 Epidemiology and molecular typing of an outbreak of tuberculosis in a hostel for homeless men *A M Kearns, A Barrett, C Marshall, R Freeman, J G Magee, S J Bourke, M Stewart*
- 125 Reliability of immunohistochemical demonstration of oestrogen receptors in routine practice: interlaboratory variance in the sensitivity of detection and evaluation of scoring systems *A Rhodes, B Jasani, D M Barnes, L G Bobrow, K D Miller*
- 131 Temporal artery biopsy: is there any value in examining biopsies at multiple levels? *A Chakrabarty, A J Franks*
- 137 The importance of skip lesions in temporal arteritis *D N Poller, Q Van Wyk, M J Jeffrey*
- 140 A study of interval breast cancer within the NHS breast screening programme *W K Cowan, B Angus, J C Gray, L G Lunt, S R Al-Tamimi*
- 147 Necropsy diagnosis of myocarditis: a retrospective study using CD45RO immunohistochemistry *K M Feeley, J Harris, S K Swarna*

Short reports

- 150 Congenital acute T lymphoblastic leukaemia: report of a case with immunohistochemical and molecular characterisation *J Tao, E Valderrama, L Kahn*
- 153 Basal cell adenocarcinoma of the palate with squamous metaplasia *S O M de Sousa, M Schwarzschild, N Soares de Araujo, V C de Araujo*
- 157 Recurrence of Kikuchi's lymphadenitis after 12 years *R W Blewitt, S N Kumar, J S Abraham*
- 159 Interaction of insulin with *Burkholderia pseudomallei* may be caused by a preservative *A J H Simpson, V Wuthiekanun*
- 161 Paraovarian cystic endosalpingiosis in association with tamoxifen therapy *W G McCluggage, P E Weir*

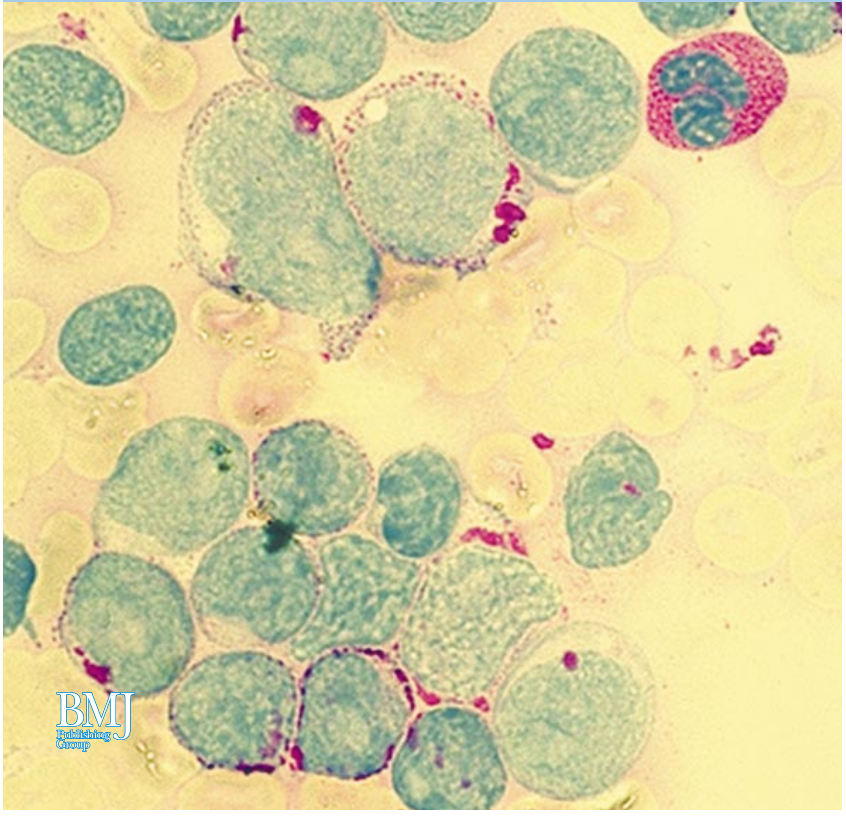
Letters

163 Rationalised virological electron microscope specimen testing policy *C McCaughey, H J O'Neill, D E Wyatt, P V Coyle; Reply A Curry, P Morgan-Capner, E O Caul*

Miscellanea

163 Book reviews•CD-ROM review•Notices•Instructions for authors• Best Practice articles

The Journal of the Association of Clinical Pathologists



53
 Vol 53 No 2 Pages 89-166
 JOURNAL OF CLINICAL PATHOLOGY
 February 2000