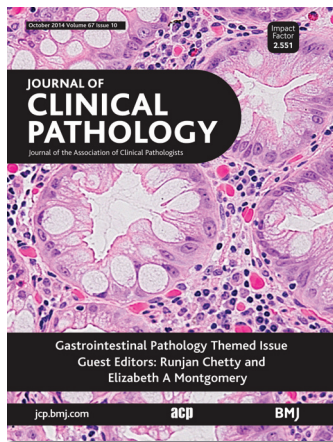


Journal of Clinical Pathology



Cover legend: Mucin poor variant of hyperplastic polyp. From Bateman AC. See page 865.

Contents

Editorial

- 847** Gastrointestinal pathology: recent developments and concepts *R Chetty, E A Montgomery, C S Lee*

Reviews

- 848** Circulating tumour cells and the epithelial mesenchymal transition in colorectal cancer
S H-S Lim, T M Becker, W Chua, W L Ng, P de Souza, K J Spring
- 854** The significance of autophagy in colorectal cancer pathogenesis and implications for therapy
K Lai, M C Killingsworth, C S Lee
- 859** Predictive markers of radiotherapy-induced rectal cancer regression
J-S Shin, T-G Tut, V Ho, C S Lee
- 865** Pathology of serrated colorectal lesions
A C Bateman
- 875** Precursor neoplastic lesions of the biliary tract
S Serra

October 2014 Volume 67 Issue 10

- 883** Some observations on pyloric gland adenoma: an uncommon and long ignored entity!
M Vieth, E A Montgomery
- 891** Cronkhite–Canada syndrome six decades on: the many faces of an enigmatic disease
T Slavik, E A Montgomery
- 898** Non-adenomatous forms of gastro-oesophageal epithelial dysplasia: an under-recognised entity?
S Serra, R Chetty
- 903** Message in a bottle: decoding medication injury patterns in the gastrointestinal tract
L Voltaggio, D Lam-Himlin, B N Limkeekai, A D Singhi, C A Arnold
- 913** The surgeon's perspective on oesophageal disease, and what it means to pathologists
C L Greene, P M McFadden

PostScript

- 919** Correspondence
- 921** Letter to the Editor

Receive regular table of contents by email.
Register using this QR code.



This article has been chosen by the Editor to be of special interest or importance and is freely available online.



Articles carrying the Unlocked Logo are freely available online under the BMJ Journals unlocked scheme.
See <http://jcp.bmj.com/info/unlocked.dtl>

C O P E COMMITTEE ON PUBLICATION ETHICS

This journal is a member of and subscribes to the principles of the Committee on Publication Ethics
www.publicationethics.org

equator
network

recycle
When you have finished
with this please recycle it