

SUPPLEMENTARY FILE 5

Biological positive control used in each run of RNA ISH

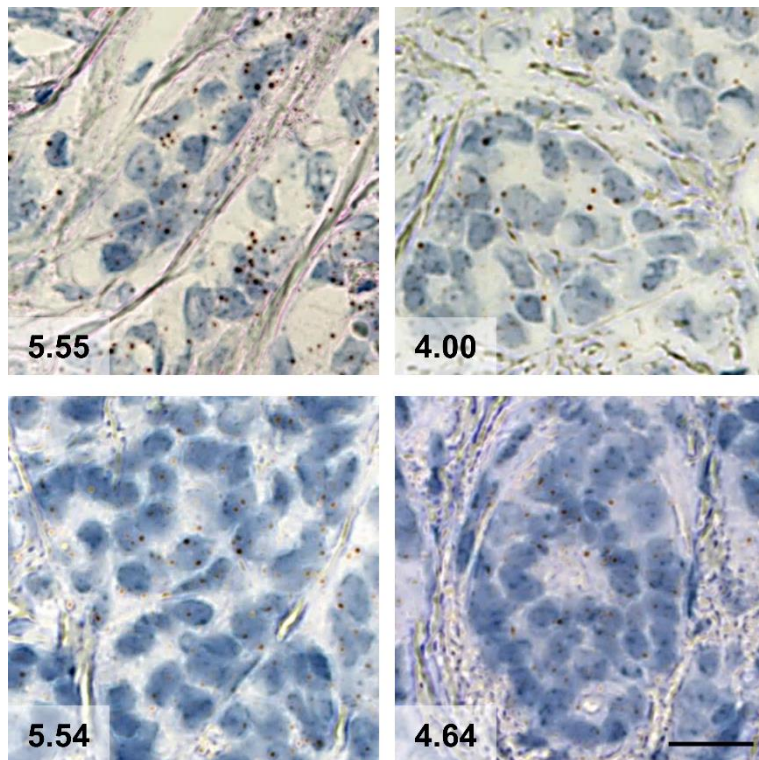


Figure S4: Reproducibility of RNA *in situ* hybridization.

Consecutive sections of the same patient sample (sample #6) were hybridized in different runs using the *POLR2A* probe (positive control). Numbers in boxes indicate the average number of spots per cell as determined with the SpotStudio software, and indicate that results were comparable between runs. Scale bar: 20 μm; all images shown at identical magnifications.