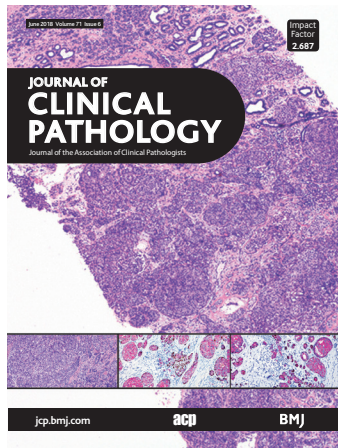


Journal of Clinical Pathology



Cover legend: Ductal carcinoma in situ arising in sclerosing adenosis with microinvasion.

Contents

Reviews

- 475** Bone marrow solid core biopsy needle: a critical assessment of the utility, benefits and limitations of the instruments employed in current day haematology and oncology
A Islam
- 483** Tumours composed of fat are no longer a simple diagnosis: an overview of fatty tumours with a spindle cell component
A J McCarthy, R Chetty

Original articles


- 493** Mammary phyllodes tumour: a 15-year multicentre clinical review
M Co, C Chen, J Y Tsang, G Tse, A Kwong
- 498** Rapid diagnosis of pulmonary tuberculosis and detection of drug resistance by combined simultaneous amplification testing and reverse dot blot
Y Chen, L Zhang, L Hong, X Luo, J Chen, L Tang, J Chen, X Liu, Z Chen
- 504** Copper deposition in focal nodular hyperplasia and inflammatory hepatocellular adenoma
V S Chandan, S S Shah, T Mounajjed, M S Torbenson, T-T Wu
- 508** Incidence and serotype characterisation of *Streptococcus agalactiae* in a Portuguese hospital
A M Pinto, T A Pereira, V Alves, A Araújo, O M Lage
- 514** The clinical and prognostic relevance of driver mutations in 203 Taiwanese patients with primary myelofibrosis
M-C Kuo, T-H Lin, C-F Sun, T-L Lin, J-H Wu, P-N Wang, Y-J Huang, H Chang, T-Y Huang, L-Y Shih


June 2018 Volume 71 Issue 6

- 522** *CEBPA* mutational analysis in acute myeloid leukaemia by a laboratory-developed next-generation sequencing assay
C W S Ng, B Kosmo, P-L Lee, C K Lee, J Guo, Z Chen, L Chiu, H K Lee, S Ho, J Zhou, M Lin, K M L Tan, K H K Ban, T W Tan, W J Chng, B Yan
- 532** Comparison of haemoglobin assessments by HemoCue and two automated haematology analysers in young Laotian children
G-M Hinnouho, M A Barffour, K R Wessells, K H Brown, S Koumnavong, B Chanhthavong, K Ratsavong, C Kewcharoenwong, S Y Hess
- 539** Accuracy, user-friendliness and usefulness of the Cobas h232 point-of-care test for NT-proBNP in primary care
C Hex, M Smeets, J Penders, V Van Hoof, J Verbakel, F Buntinx, B Vaes
- 546** Breast carcinoma in sclerosing adenosis: a clinicopathological and immunophenotypical analysis on 206 lesions
B-H Yu, S-X Tang, X-L Xu, Y-F Cheng, R Bi, R-H Shui, X-Y Tu, H-F Lu, X-Y Zhou, W-T Yang
- Short reports**
- 554** Antimicrobial activity of a novel bioengineered honey against non-typeable *Haemophilus influenzae* biofilms: an in vitro study
R S Newby, M Dryden, R N Allan, R J Salib
- 559** Identification of IgG3-specific epitope that remedies problem in diagnostic IgG subclass determination due to human genetic variation
H L Howie, X Wang, L Kapp, J N Lebedev, J C Zimring

PostScript

- 563** Do orcein-positive copper-binding protein deposits and cytokeratin 7 co-localise in periportal hepatocytes in chronic cholestasis?
C Starling, P S Bhathal, A Quaglia

 This article has been chosen by the Editor to be of special interest or importance and is freely available online.


 Articles carrying the Unlocked Logo are freely available online under the BMJ Journals unlocked scheme. See <http://authors.bmj.com/open-access/>

 Member since 2008

This journal is a member of and subscribes to the principles of the Committee on Publication Ethics
www.publicationethics.org

 equator network

 recycle
When you have finished with this please recycle it

 The online version of this article contains multiple choice questions hosted on BMJ Learning.