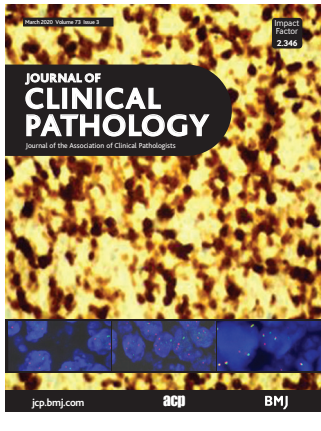


Journal of Clinical Pathology



Cover legend: Ki-67 expression and BCL-2, BCL6 and MYC rearrangements in diffuse large B-cell lymphoma.

Contents

Original research

- 121** The isolated caecal patch lesion: a clinical, endoscopic and histopathological study
A Ekanayaka, J T Anderson, M E Lucarotti, R M Valori, N A Shepherd
- 126** Clinical significance of 'double-hit' and 'double-expression' lymphomas
Z Ma, J Niu, Y Cao, X Pang, W Cui, W Zhang, X Li
- 139** Overexpression of E12BL promoted human non-small cell lung cancer progression by inducing cell EMT phenotype
H-R Li, B-Q Qiu, J Gao, C Jin, J-H Jiang, J-Y Ding
- 147** Characteristics, behaviour and role of biomarkers in metastatic triple-negative breast cancer
Y Goto, A A Thike, C C H Ong, J X Lim, N D Md Nasir, H Li, V C Y Koh, X-Y Chen, J P S Yeong, H Sasano, P H Tan
- 154** The prognostic roles of and correlation between *ALK* and *MYCN* protein expression in neuroblastoma
H-H Chang, M-Y Lu, Y-L Yang, S-W Chou, D-T Lin, K-H Lin, W-M Hsu, Y-M Jeng, S-T Jou

March 2020 Volume 73 Issue 3

- 162** Lymph node number, surface area and lymph node ratio are important prognostic indicators in neoadjuvant chemoradiotherapy treated rectal cancer
F Pitto, G Zoppoli, S Scabini, E Romairone, R Fiocca, A Ballestrero, M Sparavigna, L Malaspina, L Valle, F Grillo, L Mastracci

Short reports

- 168** Next-generation sequencing-based BRCA testing on cytological specimens from ovarian cancer ascites reveals high concordance with tumour tissue analysis
C Fumagalli, A Rappa, C Casadio, I Betella, N Colombo, M Barberis, E Guerini-Rocco
- 172** Periocular intraepithelial sebaceous neoplasia: critical appraisal of nomenclature and prognostic importance
C E Margo
- 176** Differing reflections of paediatric classical Hodgkin's lymphoma on local and distant immunological microenvironments: a flow cytometric study
S Savaşan, B AlQanber, M Henry, S Buck, M Gadjeel

Virtual case of the month

- 180** Bowel obstructed by bone
J J Sun, J Firth, L S Dvorkin



This article has been chosen by the Editor to be of special interest or importance and is freely available online.



Articles carrying the Unlocked Logo are freely available online under the BMJ Journals unlocked scheme. See <http://authors.bmj.com/open-access/>

C O P E

Member since 2008
JM00016

This journal is a member of and subscribes to the principles of the Committee on Publication Ethics

www.publicationethics.org



When you have finished with this please recycle it

MCQs

The online version of this article contains multiple choice questions hosted on BMJ Learning.