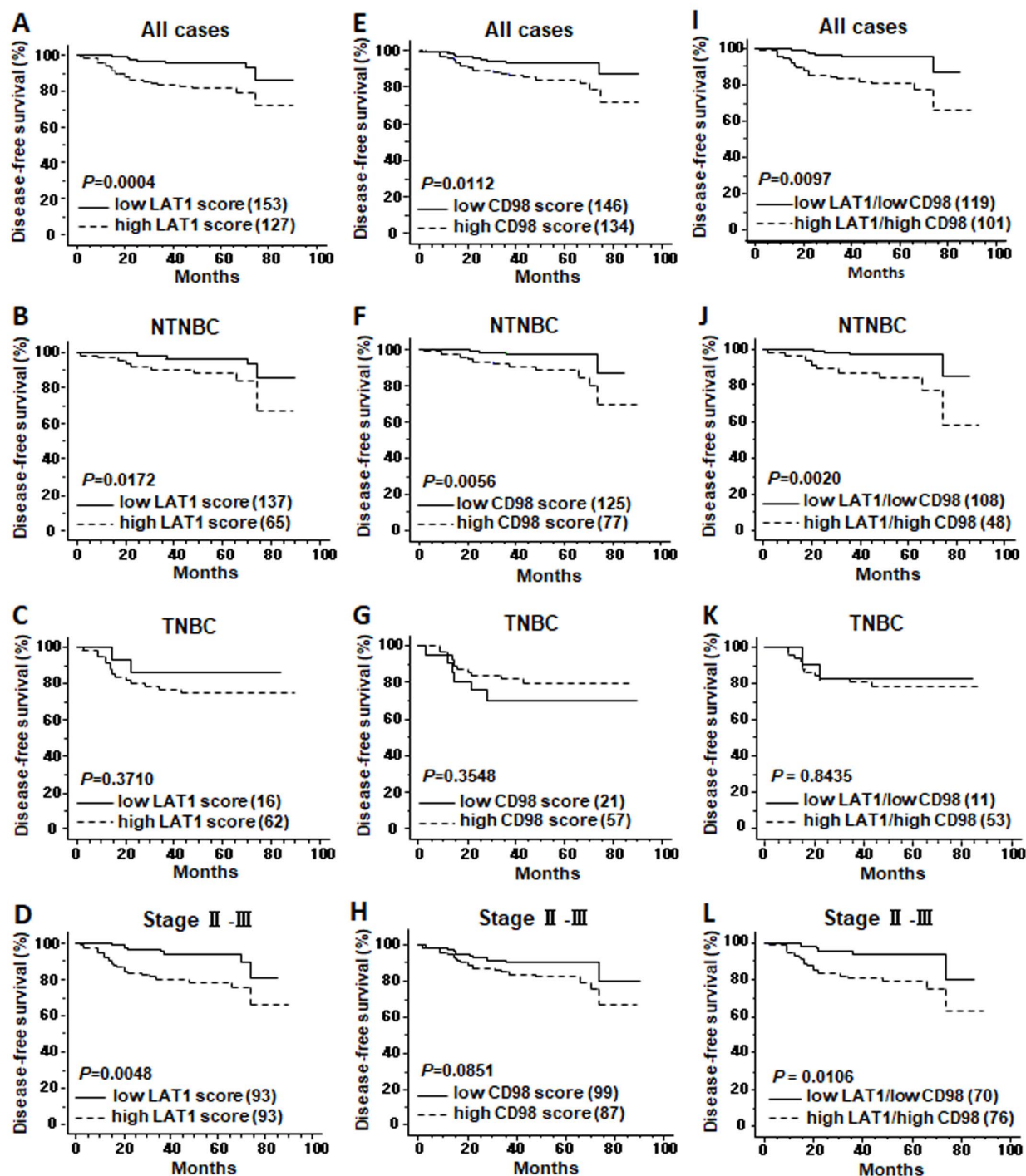


Supplementary Figure S1



Supplementary Figure S1. Disease-free survival (DFS) curves in association with LAT1 and CD98hc expression. Cases were divided into high- and low-expression groups according to LAT1 and CD98hc scores (0–4 as low and 6–9 as high). Kaplan-Meier curves of the groups in all cases (A, E, I), in NTNBC cases (B, F, J), in TNBC (C, G, K) and in cases with pathological stage II and III (D, H, L) are shown.