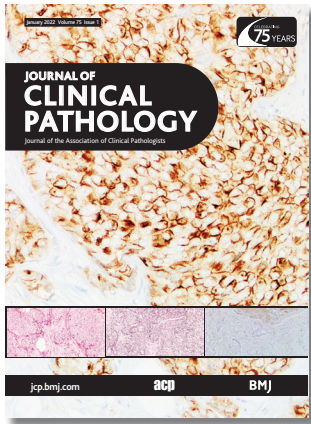


Journal of Clinical Pathology



Cover legend: Neuroendocrine tumours of the breast.

Contents

Gene of the month

- 1** Gene of the month: H3F3A and H3F3B
A P Aldera, D Govender

Review

- 5** Blunt duct adenosis: a separate entity from columnar cell lesions?
M de Boer, P J van Diest

Original research

- 10** Neuroendocrine tumours of the breast: a genomic comparison with mucinous breast cancers and neuroendocrine tumours of other anatomic sites
F Pareja, M Vahdatinia, C Marchio, S S K Lee, A Da Cruz Paula, F Derakhshan, E M da Silva, P Selenica, H Dopeso, S Chandrarapaty, H Y Wen, A Vincent-Salomon, E Brogi, B Weigelt, J S Reis-Filho
- 18** Clinicopathologic characteristics of HER2-positive metaplastic squamous cell carcinoma of the breast
T Lei, T Pu, B Wei, Y Fan, L Yang, M Shen, M Chen, J Yang, Y Zhang, Z Zhang, H Bu
- 24** Ran GTPase is an independent prognostic marker in malignant melanoma which promotes tumour cell migration and invasion
S Elsheikh, I Kouzoukakis, C Fielden, W Li, S E Lashin, N Khair, T P Raposo, W Fadhil, P Rudland, M Aleskandarany, P Patel, M El-Tanani, M Ilyas
- 30** Impact of cellular myocardial infiltration on clinical outcome in non-ischaemic heart failure
E Reichman-Warmusz, J Nowak, K Kaczmarek, E Nowalany-Kozielska, R Wójcisz
- 34** Mitochondrial molecular genetic results in a South African cohort: divergent mitochondrial and nuclear DNA findings
S Meldau, E P Owen, K Khan, G T Riordan
- 39** MDM2 gene amplification as selection tool for innovative targeted approaches in PD-L1 positive or negative muscle-invasive urothelial bladder carcinoma
M Brunelli, A Tafuri, L Cima, M A Cerruto, M Milella, A Zivi, S Buti, M Bersanelli, G Fornarini, V G Vellone, S E Rebuzzi, G Procopio, E Verzoni, S Bracarda, R Sabbatini, C Baldessari, A Eccher, R Passalacqua, B Perrucci, M O Giganti, M Donini, S Panni, M Tucci, V Prati, C Ortega, A Calò, F Alongi, E Munari, G Pappagallo, R Iacovelli, A Mosca, C Porta, G Martignoni, A Antonelli

January 2022 Volume 75 Issue 1

- 45** Diagnostic performance of melanocytic markers for immunocytochemical evaluation of lymph-node melanoma metastases on cytological samples
A Ronchi, F Zito Marino, G Toni, F Pagliuca, D Russo, G Signoriello, E Moscarella, G Brancaccio, G Argenziano, R Franco, I Cozzolino
- 50** Automated digital enumeration of plasma cells in bone marrow trephine biopsies of multiple myeloma
J A J Malherbe, K A Fuller, B Mirzai, B M Augustson, W N Erber
- Short reports**
- 58** Liquid biopsy for *BRAF* mutations testing in non-small cell lung cancer: a retrospective study
A Iaccarino, P Pisapia, F Pepe, R Sgariglia, M Nacchio, G Russo, G Gragnano, C De Luca, G Troncone, U Malapelle
- 61** Extended storage of SARS-CoV-2 nasopharyngeal swabs does not negatively impact results of molecular-based testing across three clinical platforms
K A Skalina, D Y Goldstein, J Sulail, E Hamm, M Narlieva, W Szymczak, A S Fox
- PostScript**
- 65** Hospital laboratory experience with SARS-CoV-2 (COVID-19) molecular assay sample pooling method in New York City
I S Genco, K Williams, J Pacheco, O Vele, S Duong, D Otero Espinal
- 68** Immunohistochemistry of p16 in nevi of pregnancy and nevoid melanomas: a clinical follow-up study
S S Koh, S K Lau, B F Roehmholdt, D S Cassarino
- 71** Paraduodenal/pancreatic Ewing sarcoma is very rare and therefore may be mistaken for neuroendocrine carcinoma
N A C S Wong, S Suortamo, E George, S Beavers



This article has been chosen by the Editor to be of special interest or importance and is freely available online.



Articles carrying the Unlocked Logo are freely available online under the BMJ Journals unlocked scheme. See <http://authors.bmj.com/open-access/>



This journal is a member of and subscribes to the principles of the Committee on Publication Ethics

www.publicationethics.org



When you have finished with this please recycle it



The online version of this article contains multiple choice questions hosted on BMJ Learning.