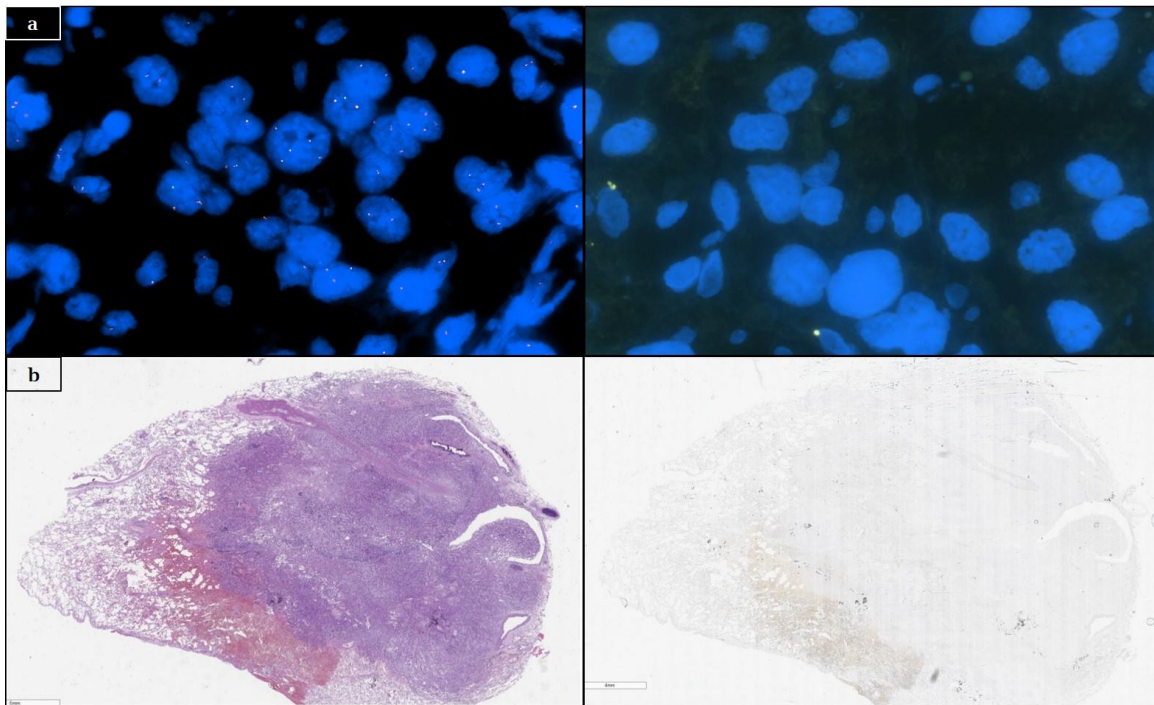
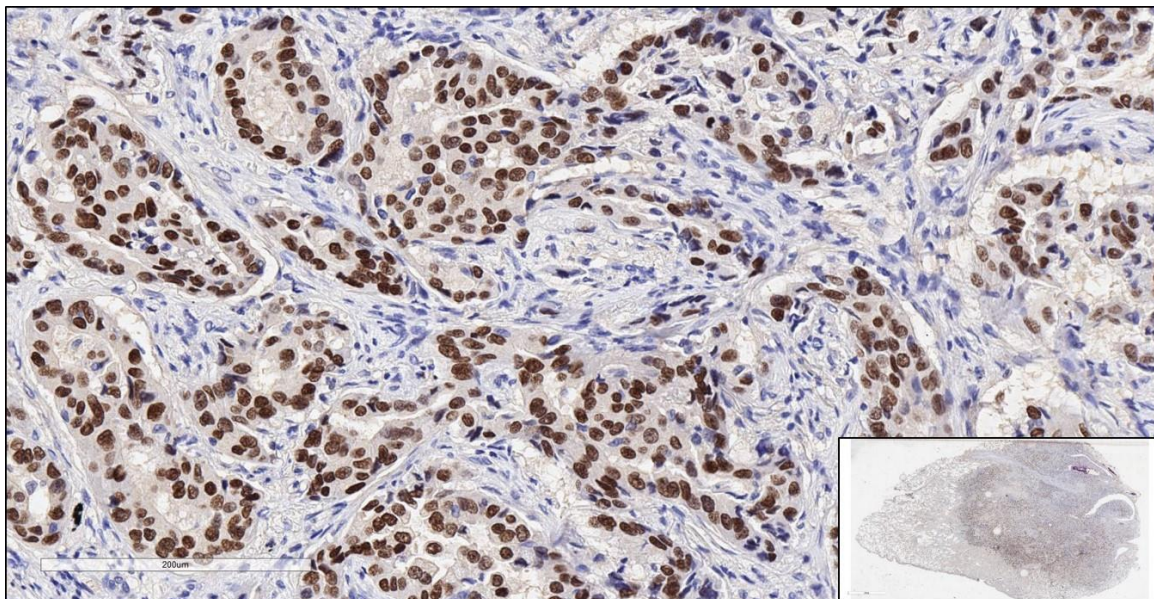


Supplemental Figure 1

Supplemental Figure 1. A representative sample of NSCLC (case 1): **a)** ALK FISH before (left) and after (right) exposure to light for 24 hours. **b)** HE staining before (left) and after (right) discoloration procedure. Scale bar 4 mm.

Supplemental Figure 2

Supplemental Figure 2. A representative sample of NSCLC (case 1) showing a nuclear TTF1 strong positivity. Scale bar 200 μ m.