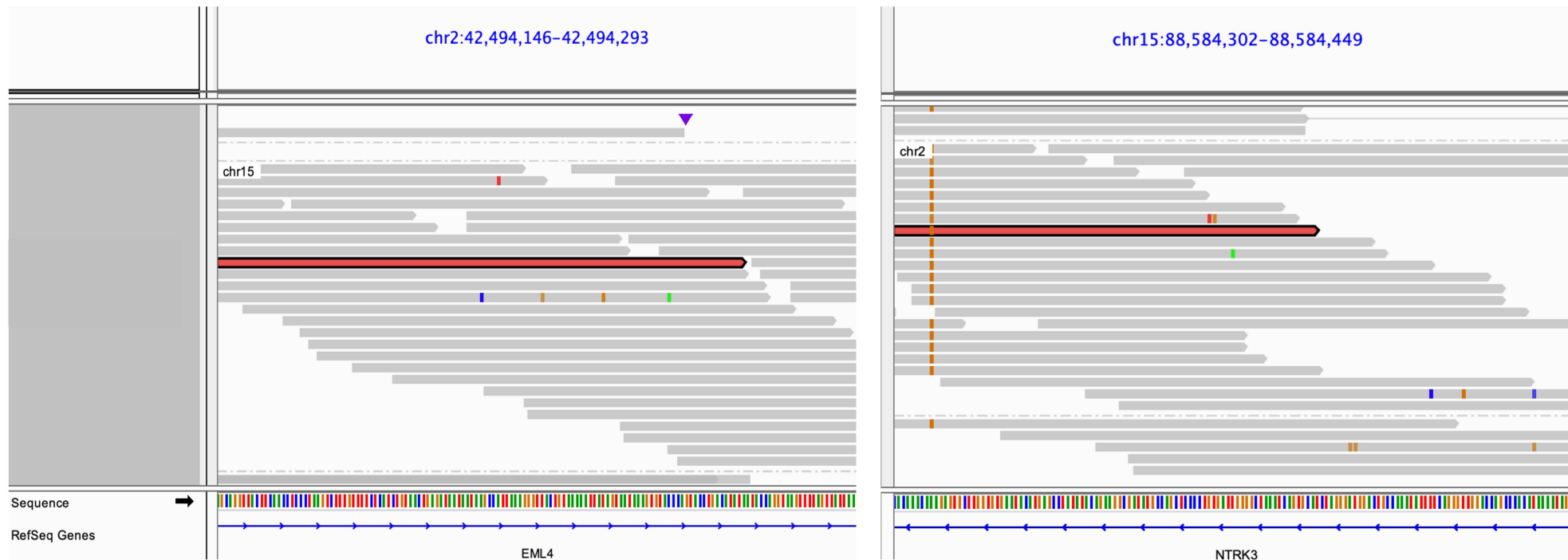


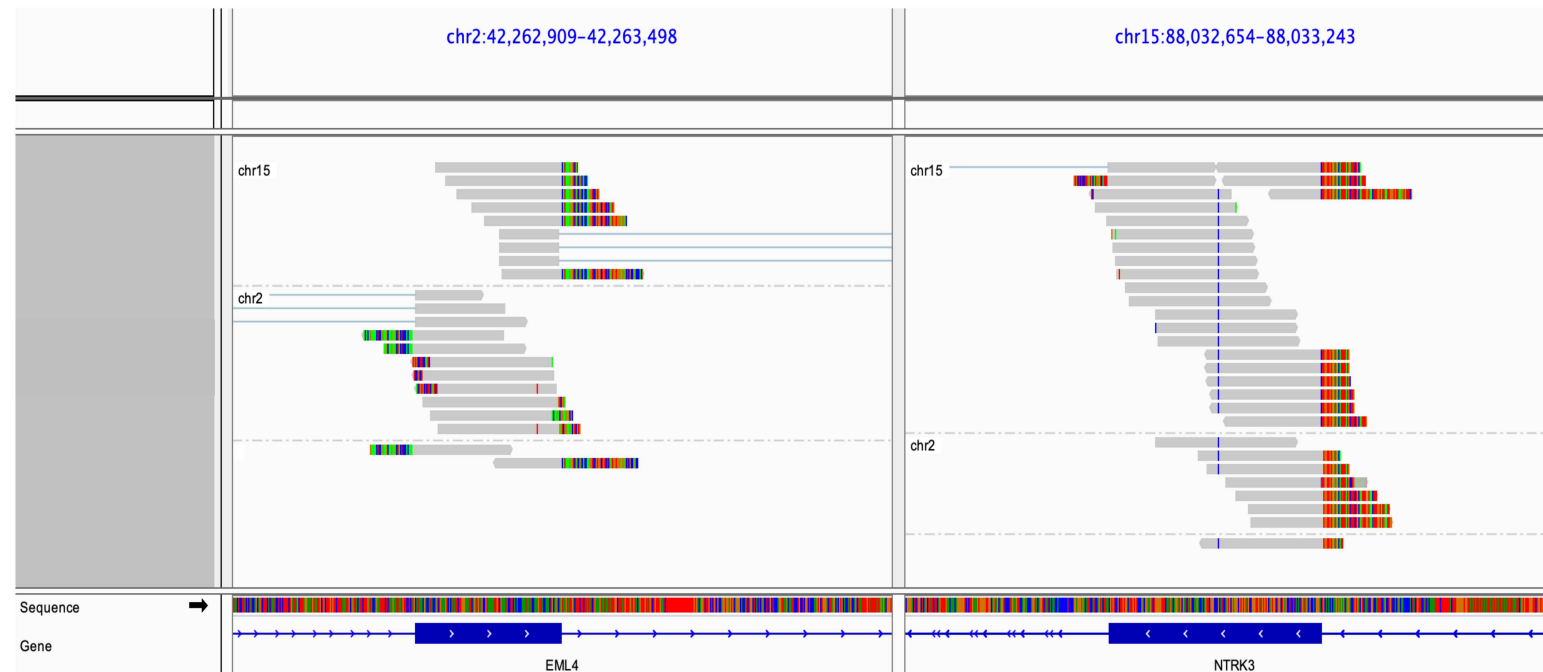
## Supplementary Figure 1A: (Patient 2) DNA Structural Variants predicting hypothetical fusion

Putative *EML4-NTRK3* WGS fusion reads viewed using IGV. WGS reads from tumour were grouped by chromosome. Reads from chr2 at the *EML4* locus are shown on the left and reads from chr15 at the *NTRK3* locus, on the right. The two reads highlighted in red are mate pairs which span the *EML4-NTRK3* fusion junction.



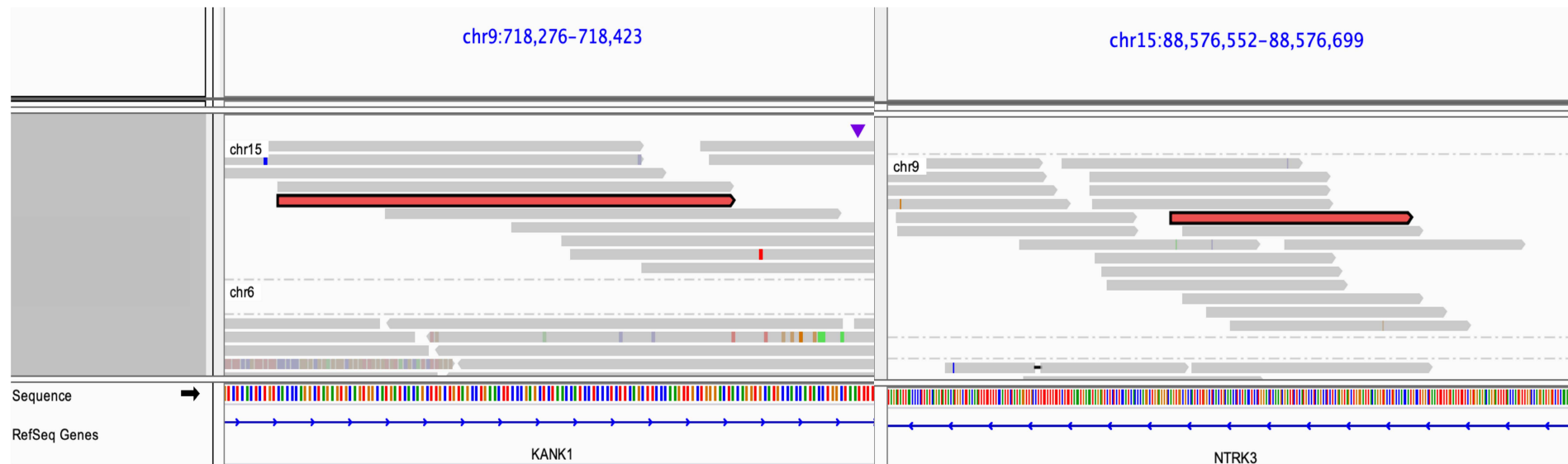
## Supplementary Figure 1B: (Patient 2) RNA Fusion Reads for predicted fusion

Putative *EML4-NTRK3* RNA fusion reads viewed using IGV. RNAseq reads from tumour were grouped by chromosome. Reads from chr2 at the *EML4* locus are shown on the left and reads from chr15 at the *NTRK3* locus, on the right. The two reads highlighted in red are mate pairs which span the *EML4-NTRK3* fusion junction.



## Supplementary Figure 2A: (Patient 3) DNA Structural Variants

Putative *KANK1-NTRK3* WGS fusion reads viewed using IGV. Reads from chr9 at the *KANK1* locus are shown on the left and reads from chr15 at the *NTRK3* locus, on the right. The two reads highlighted in red are mate pairs which span the *KANK1-NTRK3* fusion junction.



## Supplementary Figure 2B: (Patient 3) RNA Fusion Reads

Putative *KANK1-NTRK3* RNA fusion reads viewed using IGV. RNAseq reads from tumour were grouped by chromosome. Reads from chr9 at the *KANK1* locus are shown on the left and reads from chr15 at the *NTRK3* locus, on the right. The two reads highlighted in red are mate pairs which span the *KANK1-NTRK3* fusion junction.

