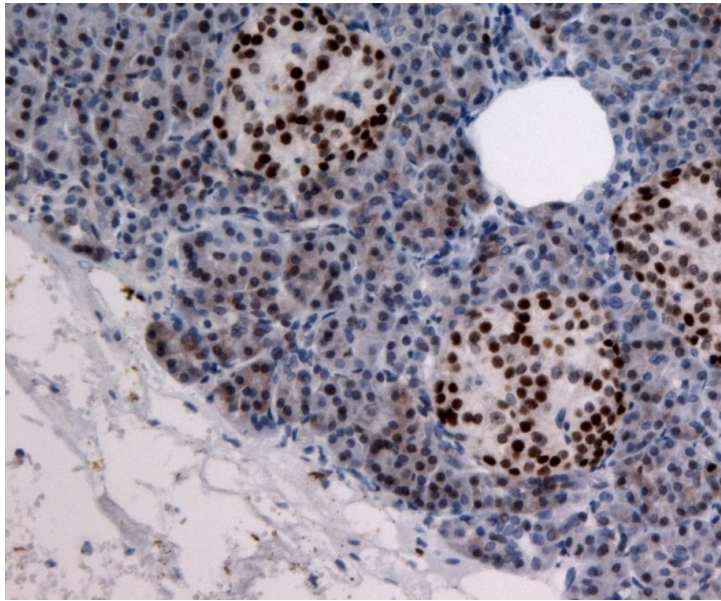


1 Supplemental file Tabasaran et al. PAX6 in ependymoma.

2

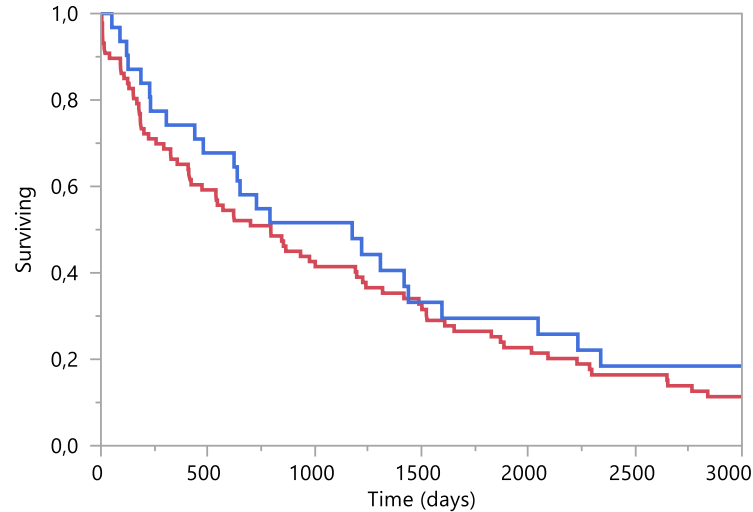


3

4 Figure 1: Immunohistochemistry PAX6: Positive control: nuclear staining of pancreatic islets  
5 (brown).

6

7



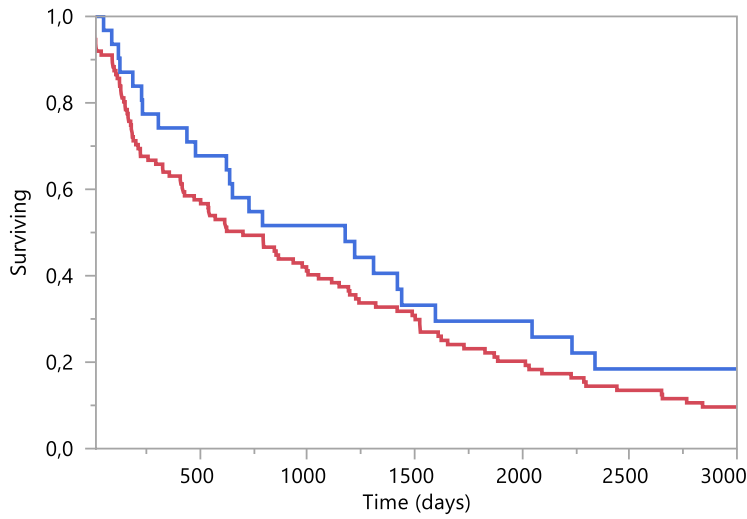
8

9

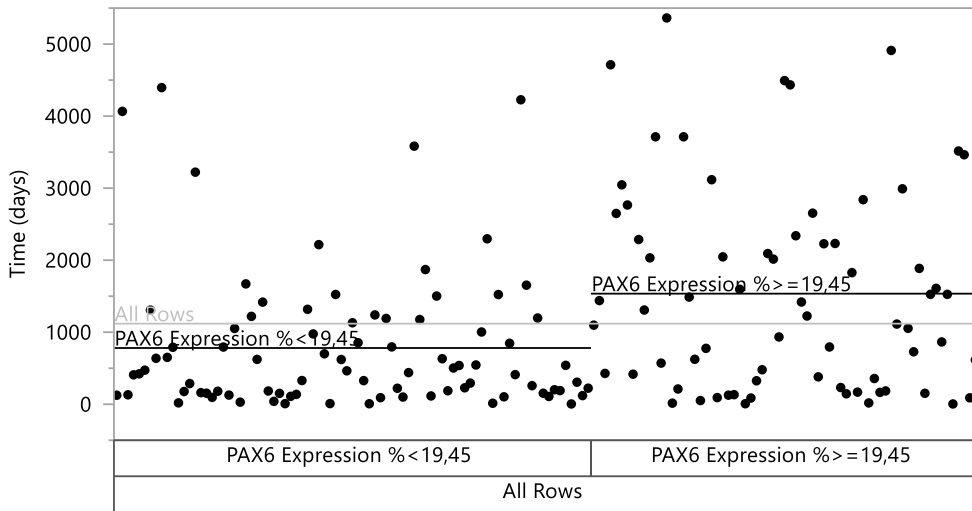
10 Figure 2A: Kaplan-Meier analysis for Ependymomas separated by histological grade (red:  
11 WHO grade II, n=87; blue: WHO grade III, n=32 (Log-rang: p=0.2399).

12

2



13  
 14 Figure 2B: Kaplan-Meier analysis for Ependymomas separated by histological grade  
 15 including myxopapillary ependymomas as grade II tumors (red: WHO grade II, n=112; blue:  
 16 WHO grade III, n=32 (Log-rang: p=0.1243).  
 17  
 18  
 19  
 20



21  
 22  
 23 Figure 3: Classification and Regression Tree (CART) analysis for PAX6 expression and  
 24 survival (time in days) as variable (left: PAX6 <19.45, n=76, mean: 718 days; right: PAX6  
 25 >=19.45, n=68, mean: 1603 days)

