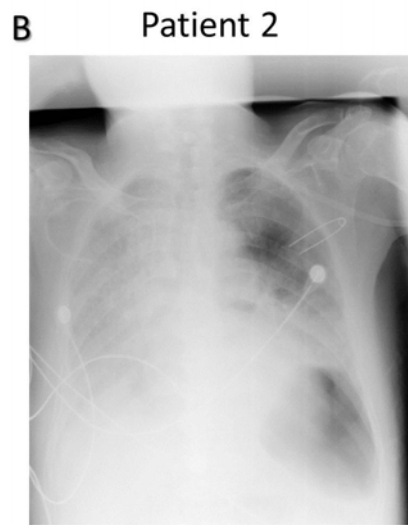
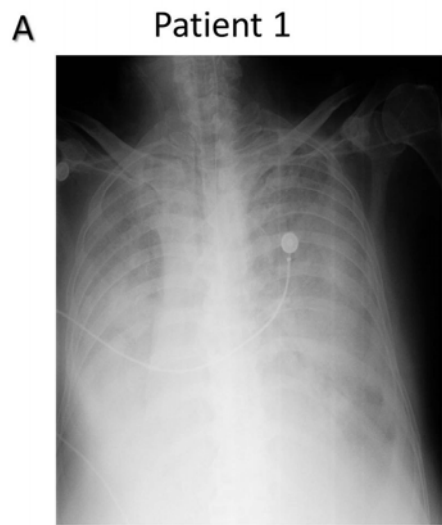
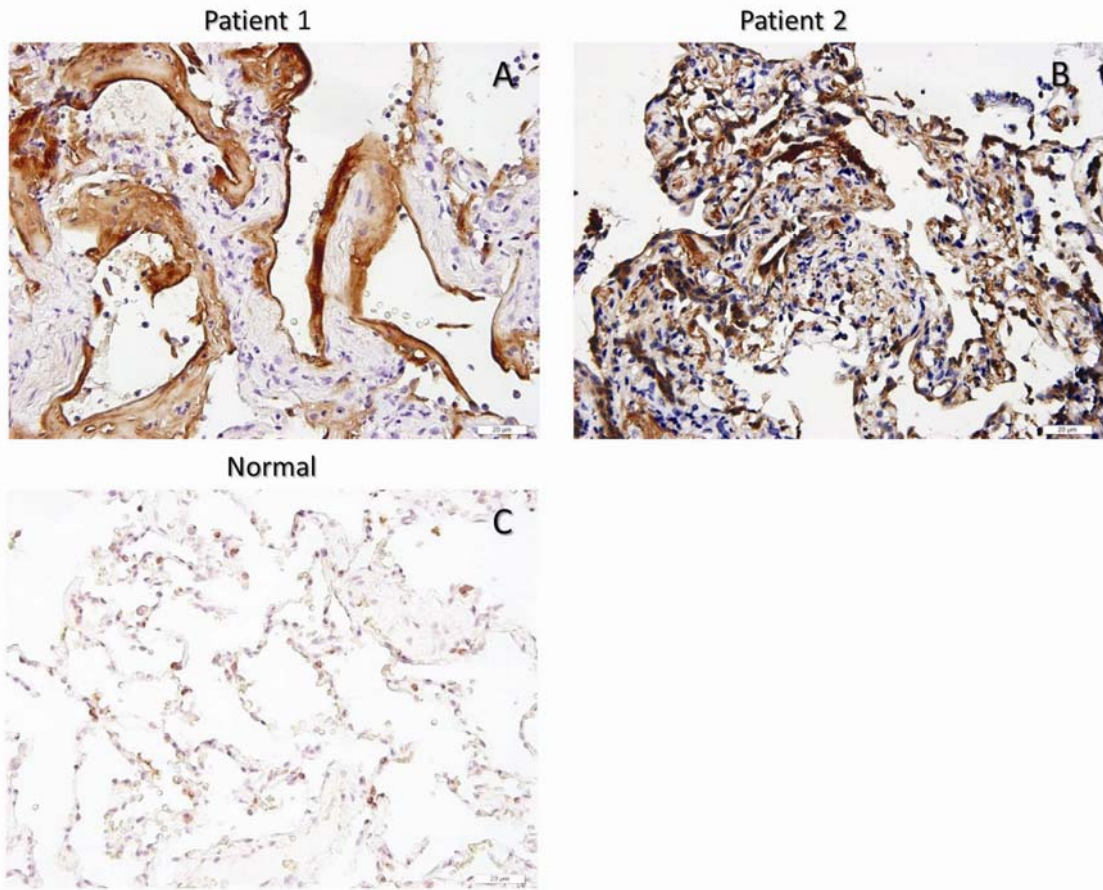


Supplementary Figure 1. Chest X-ray radiographs of patient one (A) and two (B) at very late stage of infection were shown.



Supplementary Figure 2. Immunohistochemistry of Surfactant protein B (SP-B) in lungs of patient one (A), patient two (B) and normal control (C), 400X.



Supplementary Figure 3. Immunohistochemistry of CD3 (A,B), CD4 (C,D) and CD8 (E,F) in lung tissue from patient two (A-C) and normal control (D-F), 400X.

